

Southampton City Council

# Creative Services

---

Service Level Agreement 2025/26  
**Southampton Schools**

---

## Introduction

Creating effective and impactful marketing materials is essential if you want to stand out and grab people's attention.

Whether it is promoting your whole school or special events taking place throughout the year, impactful and professionally designed marketing materials can make you stand out from the crowd.

Our team of experienced designers offer a full design service, including graphic design, web/digital design, animation, branding, concept creation and print management.

## Services included

- **Dedicated designer** – for your job/project
- **Full service solution** – from concept creation through to print/digital solution
- Art direction and commissioning of photographers

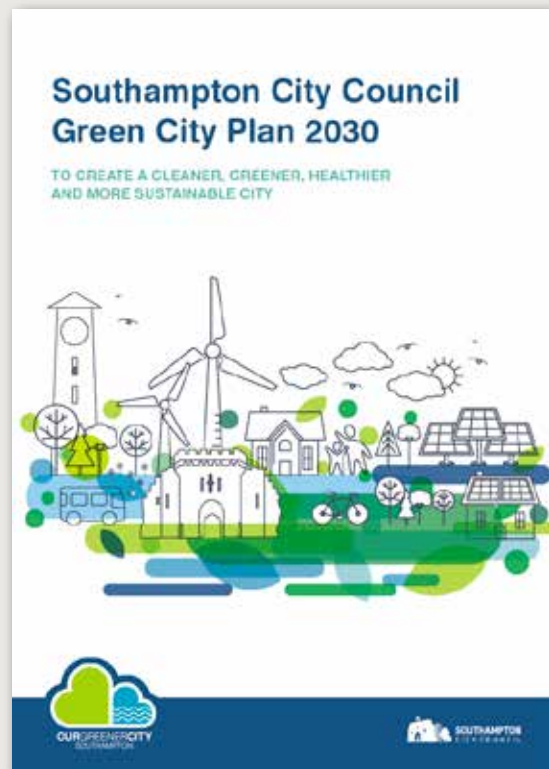
### Specialising in the following:

- Logos, branding & brand guidelines
- Prospectus, annual reports & strategies
- Leaflets, posters & flyers
- Newsletters & magazines
- Illustration, icons & infographics
- Signage, exhibition stands, roller banners & promotional materials
- Powerpoint presentations
- Social media
- Photography (art direction)
- Websites (Ux & liaison with web developer)
- Animation

### Our Greener City: Logo & brand



Powerpoint template

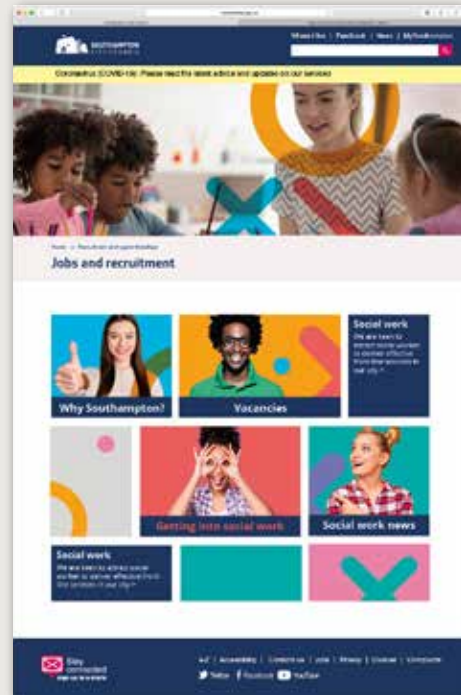


Strategy

SCC Children's Services: Branding



Social media post



Children's Service website  
[www.southampton.gov.uk/jobs/social-work/childrens-social-workers/](http://www.southampton.gov.uk/jobs/social-work/childrens-social-workers/)



Pages from the Children's Services Academy brochure



## My Journey Walktober



Social media assets



a4(1pp) poster

Please do not hesitate to get in touch to talk through any up and coming projects and see how we can help support your service.

## Contact details

Gregory Lodwick  
Creative Services Manager  
Southampton City Council

Tel: 023 8083 2214

Email: [greg.lodwick@southampton.gov.uk](mailto:greg.lodwick@southampton.gov.uk)

## Our charges

£50  
per hour