

Introduction

This event is an opportunity to find out about recent changes at the University Hospital Southampton that are helping to develop key specialist services as well as improving parking and access.

As well as hearing from the hospital, this is your opportunity to see where the city council have been investing in highway improvements and to give your views about where future improvements could be made in transport and parking in the local area.

There are officers on hand from both the hospital and the city council to answer your questions and to capture your suggestions.

If you would like to receive a copy of the action plan created from your feedback, please provide your email address on the sign in sheet.



Hospital key facts

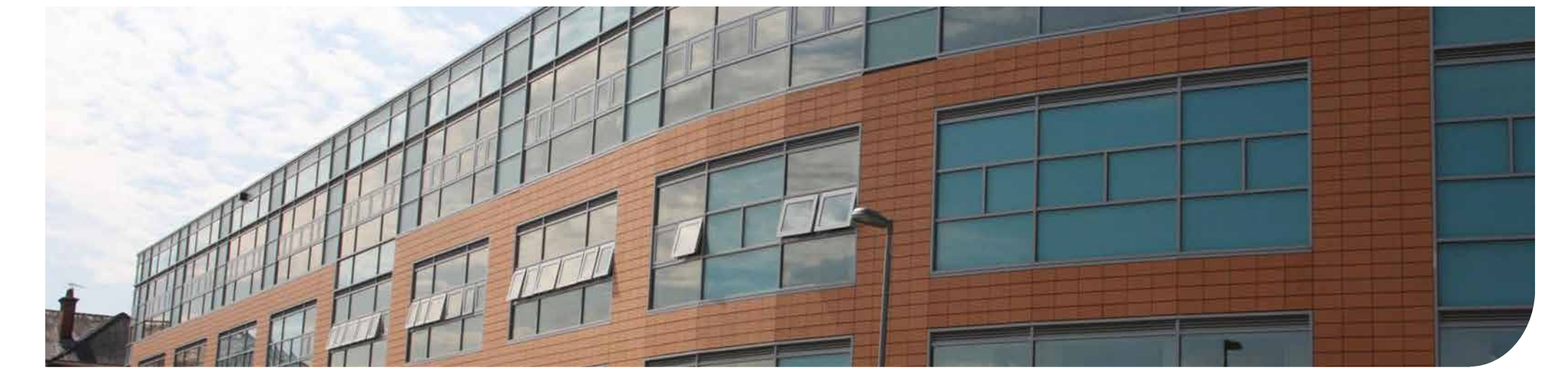


We provide services to 1.3 million people living in Southampton and South Hampshire, as well as providing specialist services to over 3.7 million people across Southern England and the Channel islands. We are one of the country's top 10 acute hospitals and have leading research and training facilities through our partnership with the University. Our services and specialities include:

- General medicine
- Cancer treatment
- Neurosciences
- Cardiac services
- Women's services
- Children's services
- Secondary respiratory services
- Gastrointestinal services
- Ophthalmology
- Orthopaedics
- Major trauma centre
- We employ 10,550 + people
- We are helped by over 1,000 volunteers
- We train over 2,500 students
- We see over 120,000 people in A&E each year
- We treat over 150,000 inpatients each year
- We see over 585,000 outpatients each year

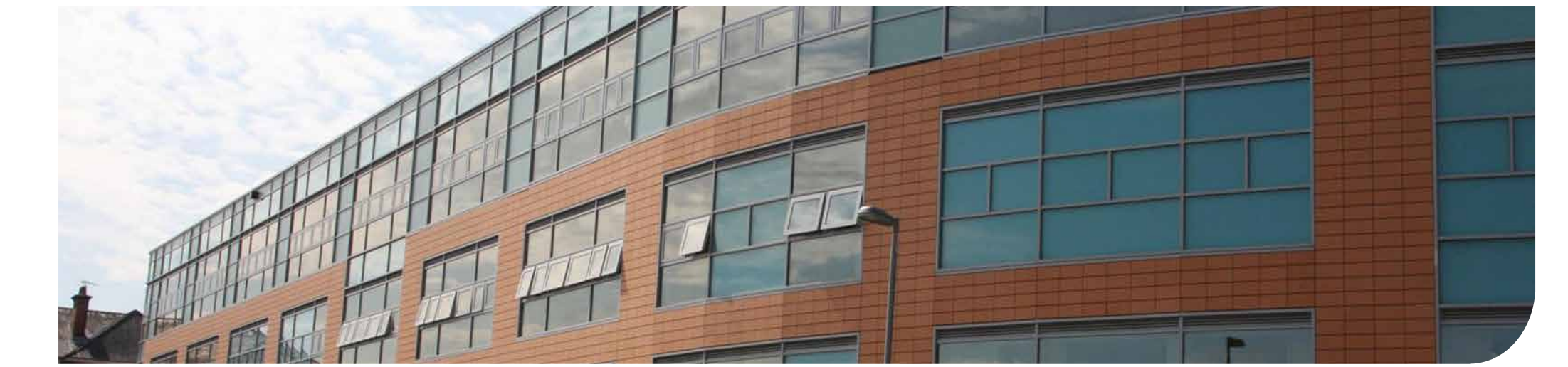


Hospital location



University Hospital Southampton was founded in 1900 and at the time was surrounded by forest land. As the city has grown the hospital has become an island site within a residential surround.

Hospital developments



Our capital development plan is set annually and is used to fund projects based upon their priority. Major projects currently underway or planned for the next 5 years include:

- The upgrade and replacement of “Linacs” to provide radiotherapy
- The new SCCI building is a centre to support world class cancer research
- A new children’s emergency department next to our ED (A&E department)
- Extending our general intensive care unit (GICU) next to the main entrance
- An onsite ‘Maggies’ cancer support centre

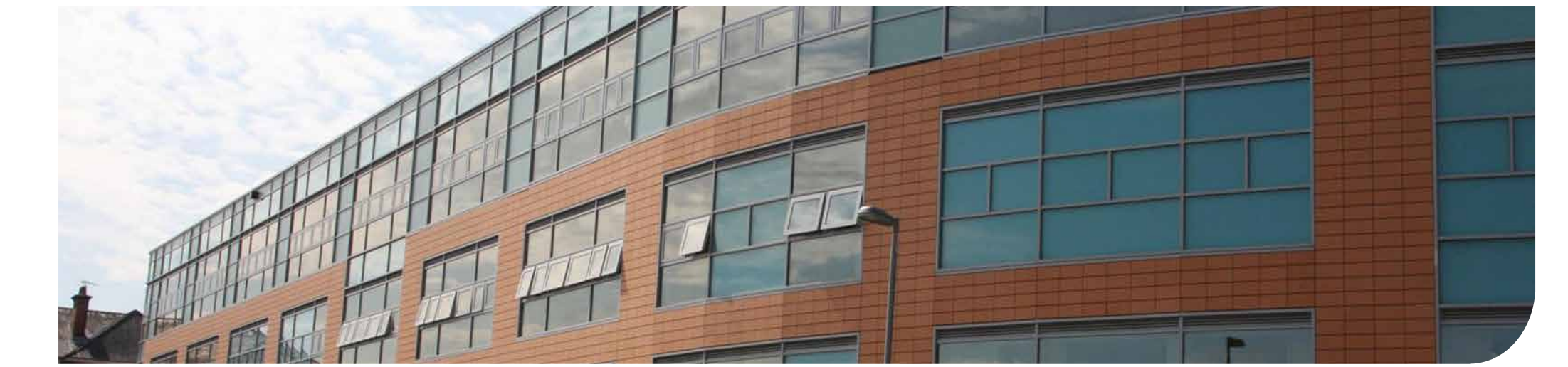
Funding for estates developments comes from a variety of sources including national development grants, and part -funding from the UHS Hospital charity in some cases.

The new main entrance and the new multi-storey car park projects have not been funded by NHS money, instead they have been funded through our Commercial Estates Development Partnership. This means that no money or

resources have been drawn away from patient care. In fact the revenue generated will be re-invested within the hospital and its frontline patient services.

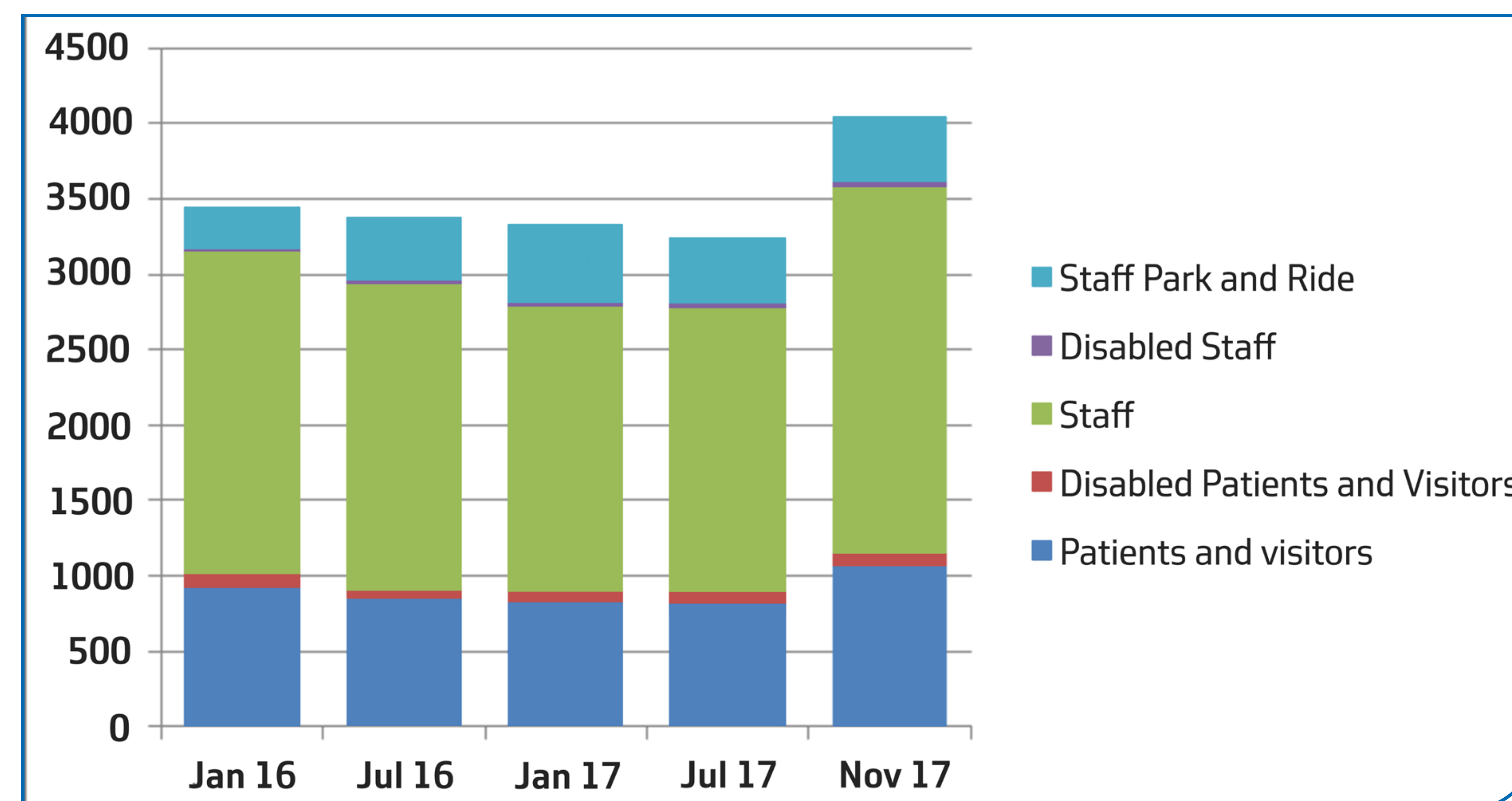


Improving accessibility

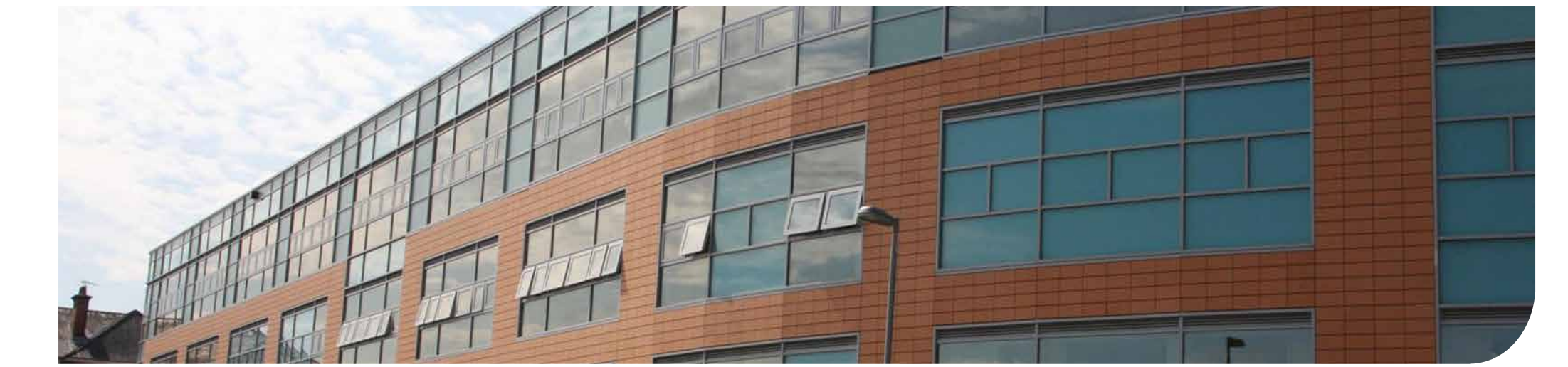


We understand the impact that staff, patients and visitors have on local parking, including the inconvenience of parking and traffic outside local homes. To try and reduce this impact we have:

- Completed building the new 750 space multi-storey car park.
- Moved staff into the multi-storey car park, freeing up space in the Laundry Road car parks, and in the Princess Anne car parks.
- Commenced resurfacing work at the Laundry Road car park to enable it to be used for patients and visitors. This will release 300 parking spaces for our patients and visitors to park at the back of the site closer to their clinics at Neuro', PETCT, Cancer care & Eye Unit.
- We have agreed plans to repaint the lines in the Princess Anne Car Parks to widen the spaces.



Improving access



Every new building construction project must have a Construction Logistics Plan. We look for ways to be sensitive and considerate in our building and reduce the impact for example:

- Undertake construction deliveries on and off site before 8am
- Instruct the contractors to park their own workforce off site and bus them in
- Utilise the Southampton Sustainable Distribution Centre (SDC) for off-site storage of some construction materials
- Ensure construction traffic marshals are deployed to assist those who have to drive and walk around the works;
- Reroute some traffic;
- Stagger large construction site deliveries.



Reducing congestion



- A number of measures have been taken to improve the congestion on the periphery of the Southampton University Hospital, including:
 - We have installed smart patient and visitor active signage to direct Patients and visitors to available spaces in car parks.
 - We have upgraded the patient and visitor barrier machines to speed up entry and exit from the site.
 - We have changed the routing of cars within the hospital grounds to create a more balanced flow of traffic using Tremona Road and Coxford Road entrances and exits.
 - We have invested in sustainable travel with improved cyclist and pedestrian access, improved cycling facilities, discounted local bus travel and continue to promote a staff car share scheme.



Changes to parking



The Laundry Road car park is being resurfaced to enable it to be used for patients and visitors. This is releasing 300 parking spaces for our patients and visitors to park at the back of the site closer to their clinics.



Key:

- Blue: Patient and visitor parking
- Green: Reduced staff parking
- Red: Location of Maggie's Cancer charity Centre)

Volume of cars using the Laundry Road exit will reduce from 700+ to 400

Highway investment



The City Council invests £7m a year into road maintenance and improvement but in addition the council bids for additional investment and in some cases this involves working with partner authorities and Highways England.

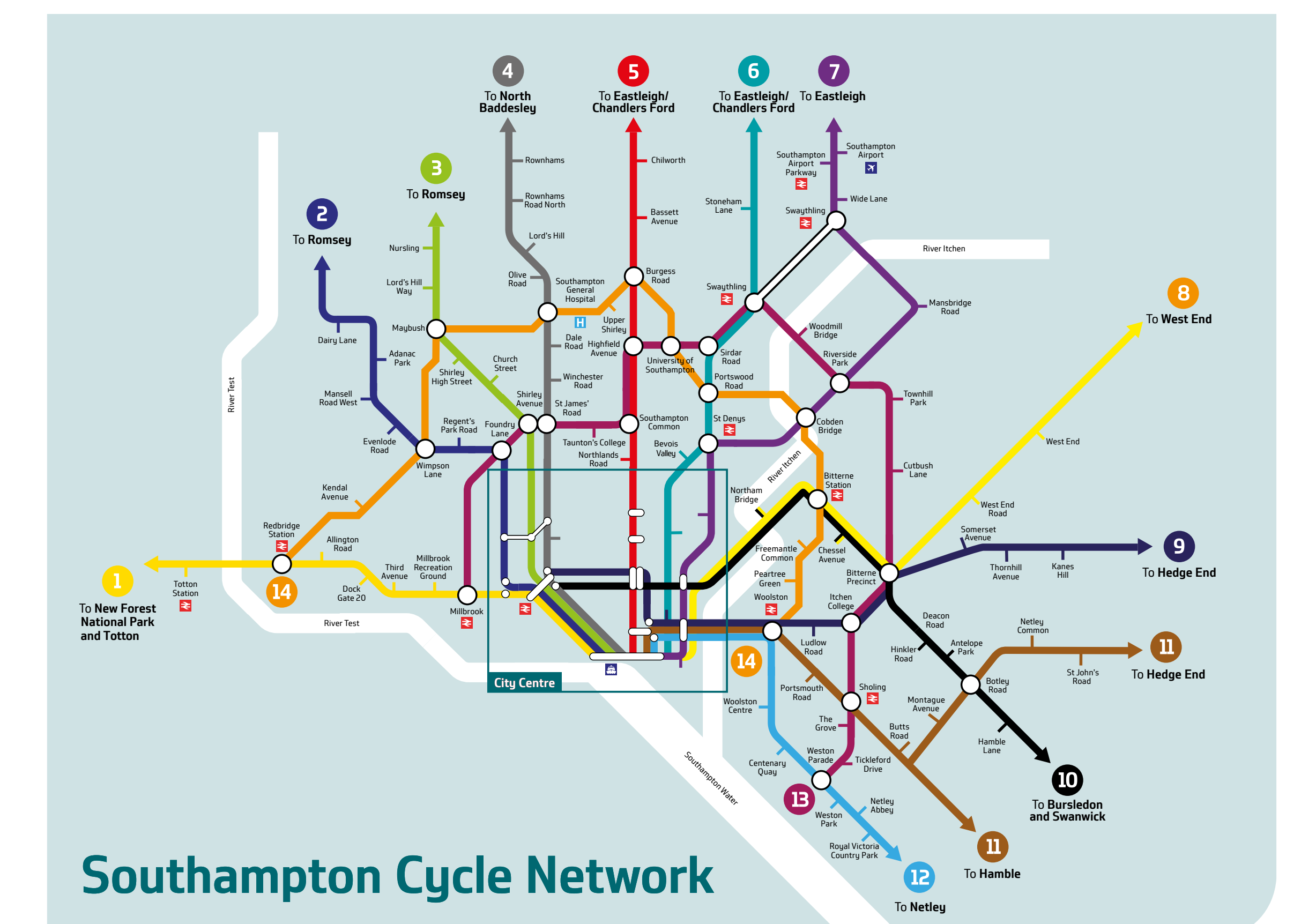
Major projects 2017-2020

- Capacity improvements at the M271/Redbridge Roundabout



- Complete reconstruction of Millbrook Roundabout
- Review of the Hill Lane / Burgess Road / Winchester Road junctions
- Improved design of right turn into the hospital from the Coxford Road entrance
- New bus stop infrastructure, shelters and real-time information accross the city.

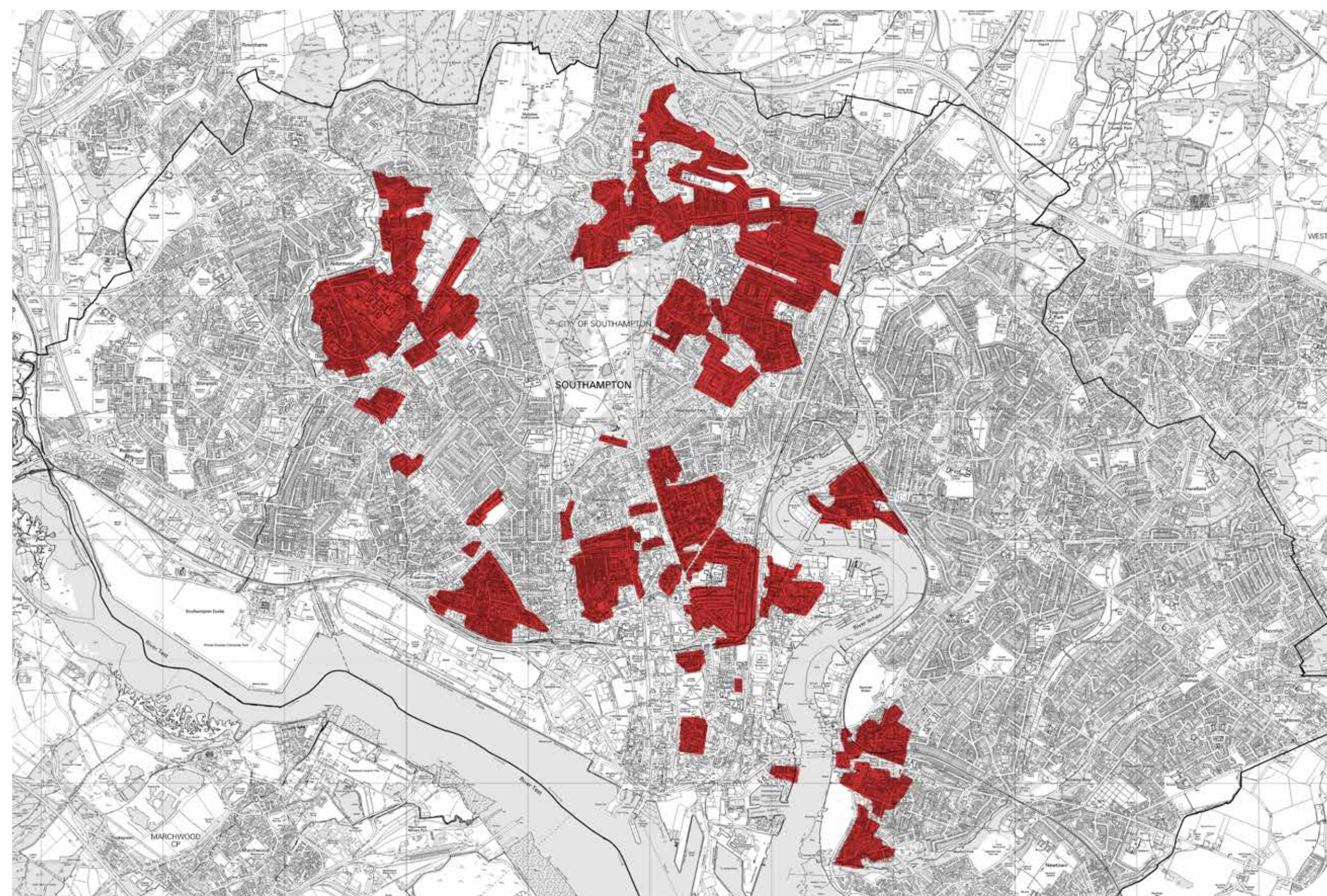
- Design and implementation of new cycle facilities and signing at Southampton General Hospital



Resident Parking Zones



The City Council will investigate implementing a permit parking restrictions if a representative group of those residents directly affected request it. A formal consultation then needs to establish that a majority of residents are in favour. This process, including implementing, is subject to resources and funding.



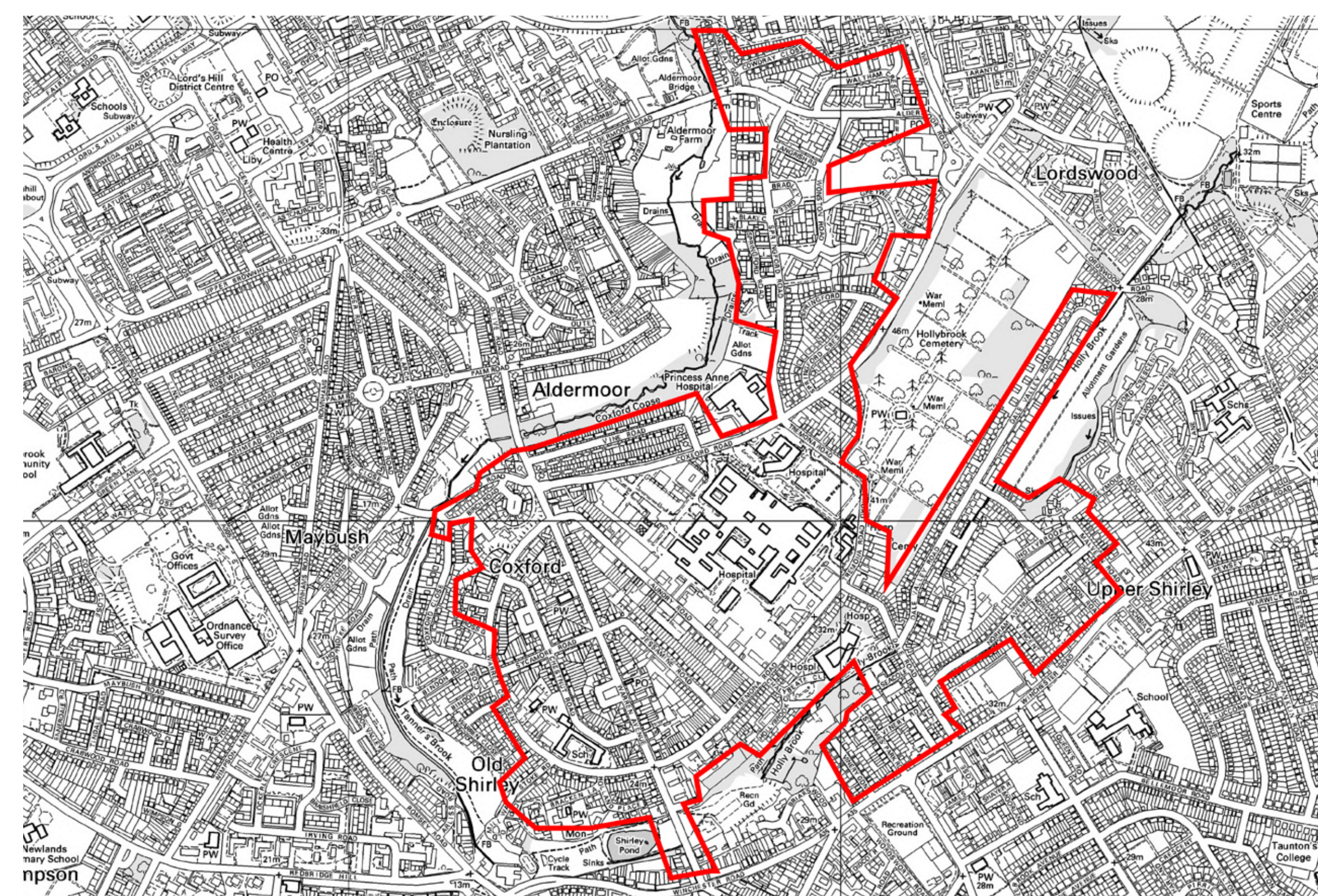
Southampton's Resident Parking Zones

Permit Charges

Southampton	£30
Portsmouth	£30
Reading	£30
Bristol	£24 - £72
Bournemouth	£50 - £100
Brighton	£130

Recent Parking Changes around the Hospital

- No Waiting at any Time restrictions & 90 minute Limited Waiting Bays implemented in Hollybrook Cemetery (March 2016)



Hospital Resident Parking Zone

- Permit parking bays in Vine Road, Coxford Road, Springford Crescent, Springford Road and Arcadia Close changed to Permit Holder only (May 2016)
- No Loading restrictions implemented on Coxford Road and Tremona Road to ensure key access roads are kept clear (December 2016)
- Extension of Zone 7 along the western end of Coxford Road (September 2017)

Sustainable travel



The City Council is delivering a £3.1m programme of initiatives under 'My Journey' to encourage more cycling and walking in the city and on three main commuting routes where other capital investment is planned or underway. There are **four** parts of this 3 year project:

Element 1: Work with employers (including Southampton General Hospital)

Providing travel advice, support and incentives to businesses so that they can encourage staff and customers to use public transport, walking and cycling and car-sharing instead of routinely driving. We also arrange travel information 'road shows' and bike safety checks for those businesses as we have the hospital.

Element 2: Promoting a cleaner, greener school run

Working with local schools (including Foundry Lane, Newlands and Fair Isle schools). Providing a package of activities, infrastructure, assemblies, challenges, curriculum materials, incentives and awards to encourage pupils and their families to use alternatives to the car for school runs.

Element 3: Overcoming barriers to everyday cycling

Helping people to get used to cycling with regular led bike rides and the annual HSBC City Ride (formerly SkyRide). We offer bike maintenance training and 'try a bike' events.

Element 4: Marketing and publicity of 'My Journey'

Providing news, events, information, journey planning and advice. My Journey is a collaborative county wide brand for promoting greener travel to encourage people to walk and cycle more often. Visit myjourneysouthampton.com



Air Quality



Southampton City Council is working to improve air quality and cut harmful emissions from industry, traffic and other sources to protect the health of residents in the city. Improving air quality can support economic growth by making the city a more attractive place to live, work and visit.

How are we improving air quality?

- By getting 100% of schools in Southampton signed up with travel plans
- Travel planning with local hospitals, GPS and businesses
- Community engagement setting up the Clean Air Network
- Encouraging low emission vehicles through city centre concessions
- Working with University Hospital Southampton to encourage consolidation of HGV deliveries.

What is airAlert?

A FREE air pollution warning service, which can help people who suffer with health conditions such as asthma, heart disease, lung conditions that cause breathing

difficulties and angina, by taking preventative action before air pollution events occur. Each time an alert is issued via www.airalert.info/Hants, airAlert provides the location, time and period of the forecast air pollution.



Hospital Access Plan

We want to hear your thoughts about the recent changes around the hospital and what you think are the key issues relating to roads, footways and public transport in your community.

- Grab a pen and post-it and stick your suggestions here
- Pinpoint specific hot spots of concern on the large maps around the room and tell us what the issue is
- Give us feedback by writing to actionline@southampton.gov.uk by the end of January 2018.

Using your feedback the council and the hospital will develop an action plan to improve access around the hospital, which we will share with you.

Feedback Here

Feedback Here