
Mayfield Park Management Plan 2010-15



2004/05. 2005/06. 2006/07. 2007/08. 2008/09. 2009/10

**Produced by the Neighbourhood
Services Division
& key Mayfield Park Stakeholders**

Updated January 2013

Contents	Page
Foreword	3
Executive summary	4
Chapter 1- Introduction	7
1.1 Introduction.....	7
1.2 Description of Mayfield Park.....	7
1.2.1 The Front Lawn	8
1.2.2 Bowling Green	8
1.2.3 Nursery	8
1.2.4 Woodland Garden	8
1.2.5 Back Lawn	8
1.2.6 Old Putting Green area.....	9
1.2.7 Woodland	9
1.2.8 Recreation Ground	9
1.2.9 Partners	10
1.3 Brief History	12
1.3.1 Old Mill House	14
1.3.2 Fox's Monument	14
1.3.3 Mayfield Park Bowling Club.....	14
1.4 Policy Context	16
1.5 Service Standards	19
1.5.1 Service Promises	19
1.5.2 Quality Audit	19
1.6 Resources	20
1.6.1 Staff	20
1.6.2 Partner Resources.....	20
1.6.3 Finance and Budget	21
1.7 Community Involvement.....	22
1.8 User Feedback	23
Chapter 2 - Management Strategy	24
2.1 Vision.....	24
2.2 Aims	24
2.3 Specific Objectives for 2010/11	24
2.4 Management Structures	25
2.5 Green Space Policies Relating to Mayfield Park	25
2.5.1 Bowling Green	25
2.5.2 Health and Safety	26
2.5.3 Enviro-crime and cleanliness.....	26
2.5.4 Sustainability	27
2.5.5 Conservation and heritage	28
2.5.6 Marketing.....	30
2.5.7 Trees	31
2.5.8 Park Lodge	31
Chapter 3 - Actions and Recommendations	32
3.1 Measuring Success	32
3.2 Programme of events for 2010/13.....	36
3.3 Maintenance schedule	37
3.3.1 Equipment Maintenance.....	38
3.4 Action plan for 2010/2013	39
3.5 Friends of Mayfield Park Action Plan 2009/10.....	48
Appendix 1: Map showing maintenance regimes by area in Mayfield Park	50
Appendix 2: Structure as of January 2010 for Mayfield Park	52

Foreword

Mayfield is the classic district park in Southampton. It is a gem of a park tucked away on the east side of the city that offers that unique blend of traditional features and quality plants. We have a dedicated parks team that work hard to maintain a really high standard. The Mayfield gardeners are strongly supported in delivering an excellent park experience by the Bowling Club, Friends of Mayfield Park and the Mayfield Nurseries plus other area based grounds staff.

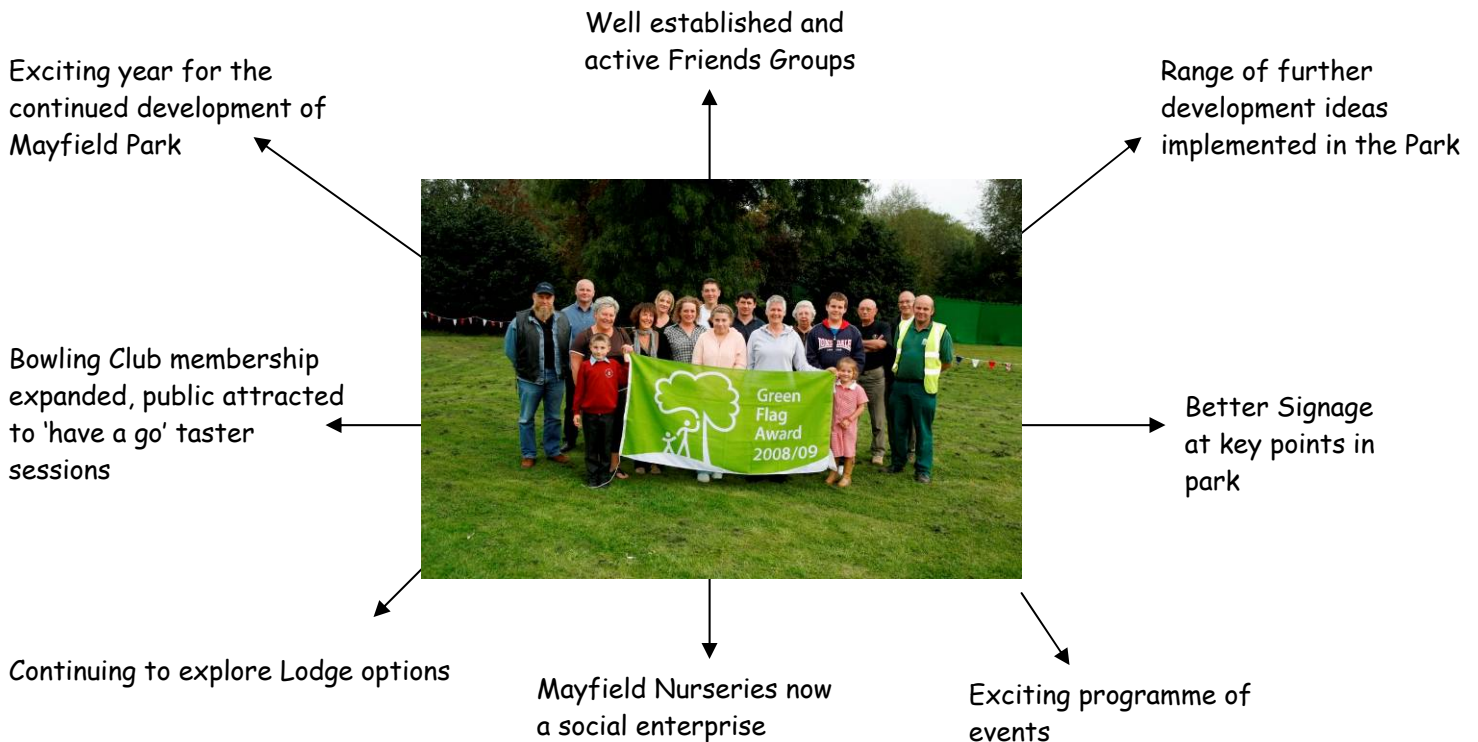
To my mind this Park is literally a blast from the past. I love the bowling green and the nearby nursery. Walking through the woodlands and gardens makes me feel as though I'm walking through a top class stately garden and parts of the place ooze peace and tranquillity.

I am proud to support this, our seventh application, for the Green Flag award. I am sure we are building on our work of the past and that Mayfield continues to exemplify the best traditions of our country's parks and green spaces.

Councillor Williams
Cabinet Member for Housing and
Local Services



Executive summary



Exciting year for the continued development of Mayfield Park - The award of the sixth consecutive Green Flag in 2009 encouraged the team at Mayfield to pull together to make the park even better. The enthusiasm has continued and the Friends groups, Mayfield Nurseries (now a subsidiary of MIND) and the Bowling Club are all working in close partnership with the Parks and Street Cleansing (P&SC) team to identify and carry out improvements and hold successful events.

Well established Friends Groups – In 2009 the groups helped to deliver a range of public participation events as well as securing £5000 for improvements to Mayfield Nursery. Events included litter picks, Himalayan Balsam clearance and seed collection. These actions helped integrate their support with the management and maintenance of the park provided by P&SC staff and other key stakeholders. In 2010 the Friends will continue assisting with maintenance tasks and hope to take on bigger challenges such as delivering a number of larger projects and obtaining further external funding.

Range of further development ideas identified for Mayfield Park -Contained in the plan are a series of actions to review and improve areas of Mayfield Park. A programme of continuous improvement is followed that includes clearance of areas of undergrowth to allow views across to The Obelisk and to bring two areas of the park visually together.

Sustaining the programme of events in the Park – The 2009 event programme provided a varied range of activities. Highlights included the Spring into Action and the Natures Harvest events in spring and autumn respectively. These attracted many new users to the park and also helped boost the Friends Group membership.

Continuing to explore possible uses for the Park Lodge – Further options for the Lodge have been discussed over the year, both with the Friends groups and internally in the Council. It is now looking likely that the Lodge will be disposed from Council stock as a residential property. However, a final decision has not yet been made. The extent of the garden that will be disposed of with the Lodge also needs to be agreed. Neighbourhood Services will be working to try and secure some of the capital receipt for use in the park.

Mayfield Nursery expanding – The MIND group using the nursery have now become a social enterprise and are renamed as Mayfield Nurseries. They are a subsidiary of MIND. The reasons for this change are to enable the nursery to be more creative in raising funds, to achieve future sustainability and to continue its work with mental health service users and local community groups.

Mayfield Bowling Club goes from strength to strength – with membership now exceeding 120 people Mayfield Park Bowling Club has gone from strength to strength in 2009. The Members have put great efforts into promoting the bowling club and its free starter sessions for the public. They have also purchased a number of seats for use by the public, completing the formation around the green. New planters bought and maintained by the members have also enhanced the area around the pavilion.



Sunny Afternoon Watching the Golf

Map of Mayfield Park



- Key**
- 1 Mayfield Nurseries
 - 2 Mayfield Bowling Club
 - 3 Car Park
 - 4 Stable Block/Parks Dept
 - 5 Spring Garden
 - 6 Ornamental Lawn
 - 7 Site of Old Mill House
 - 8 Fox's Monument
 - 9 Football Pitches
 - 10 Children's Play Area
 - 11 Basketball/ kickabout
 - 12 Chamberlayne Leisure Centre

Chapter 1- Introduction

1.1 Introduction

This management plan has been produced in consultation with the key stakeholder groups at Mayfield Park. It provides a framework to guide the development of Mayfield Park and ensures that it continues to improve with respect to its heritage and in meeting the social and recreational needs of the local community and visitors.

The management plan sets out the general principles that should be applied over the next three years and includes an action plan for specific developments and improvements.

The management plan is a 'live' document in that the development of the park is guided by the plan but not limited by it. Staff working in the park and the various key stakeholders (Friends of Mayfield Park, Bowling Club, Mayfield Nurseries and the Friends of Mayfield Nurseries) have assisted in writing the document and have copies to refer to during the year.

The first chapter gives an overall introduction to Mayfield Park including the history, features and characteristics. This is followed by the management strategy, detailing aims and objectives. The third chapter contains recommendations and actions to be applied to the park in the short and longer term.

The management of Mayfield Park is based upon this Management Plan, City Council Policy, and Legal Requirements as well as being based upon the views and requirements of residents, voluntary groups and local interest groups.

1.2 Description of Mayfield Park

Mayfield Park is situated in the south-east of Southampton and is bounded by Wrights Hill and Weston Lane. The Park consists of the former grounds of Mayfield House, and includes the local landmark the Obelisk that commemorates the radical politician Charles James Fox. The Park is part of an important green corridor in the east of Southampton linked by Greenways starting at Bursledon Road and ending up at Weston Shore. Shoreburs Greenway follows the early 19th century carriageway that linked Weston Grove House with Portsmouth Road. A map of the Park can be seen on page 6 and on the council's website; <http://www.southampton.gov.uk/parks>

The Park is a large 17 ha area of formal and informal parkland with woodland walks and Grade II listed buildings. The formal planting includes azalea beds and a sizeable herbaceous planting. Facilities include football pitches, a basketball court, play area, bowling green and skateboard run. The Park has two car parks and is accessible from several major bus routes.

Mayfield Park also incorporates a depot for the Parks and Street Cleansing district team working in this area of the city, using the old stable block which is a Grade II listed building. Mayfield Park is a centre of excellence for training and activities relating to the Open Spaces NVQ programme.

For the purpose of the management plan and for ease of description the park has been divided into the following areas:-

1.2.1 The Front Lawn

At the main entrance to the park from Weston Lane, there is a formal lawn area with mixed seasonal planting and mature trees. The seasonal bed is planted and managed by Mayfield Nurseries. There is also seating, bins and a notice board which provides information about park events and the various community groups.

1.2.2 Bowling Green

The bowling green is managed in partnership with the Mayfield Park Bowling Club who re-invests income into the facility. Features include herbaceous planting, a fully accessible pavilion including meeting room and public toilets.

1.2.3 Nursery

The old walled garden of Mayfield House is a nursery facility that is leased to Mayfield Nurseries for the Southampton Horticultural Therapy Project. Mayfield Nurseries hold several open days during the year and sell their plants to the public. They have an established café providing refreshments and light snacks, any income is re-invested in the nursery.

1.2.4 Woodland Garden

Informal walks through mature ericaceous beds, mixed azalea and rhododendron planting and general acid loving planting.

1.2.5 Back Lawn

A formal garden mixing seasonal displays with herbaceous planting, surrounded by woodland and the nursery wall;

- Three formal seasonal beds (spring and summer displays), redesigned into their current diamond shape for the Jubilee, each centred with conical yews.
- Large herbaceous border
- Seating and bins.

1.2.6 Old Putting Green area

The site of the old putting green is now used as the main area for community events. There is an old pollarded sweet chestnut and the Friends of Mayfield Park recently improved this area, removing paving and returning the ground to grass and planting spring flowering bulbs.



1.2.7 Woodland

The park incorporates considerable woodlands that consist of a diverse range of habitats including 11 hectares of ancient woodland, a stream and associated wetlands and a partly restored old carriageway.

1.2.8 Recreation Ground

A large area used for recreation which has four football pitches used throughout the season. There is also a play area and a hard court basket ball/ informal kick about area. The Obelisk can also be found in this area.

In 2010 the slope in this area provided a great place to go sledging. People came from miles around to play in the few inches of snow that fell over Southampton.



1.2.9 Partners

Mayfield Park is the home of the Mayfield Park Bowling Club who operate the public bowling green in partnership with the City Council. The Nursery situated within the old walled garden is leased to Mayfield Nurseries (a subsidiary of MIND) to operate the Southampton Horticultural Therapy Project. In addition to these, there are two active Friends Groups.

Friends of Mayfield Park became a constituted group in 2005 they have 35 members and are actively involved in the maintenance of the park. The District Manager works closely with the group and several developments over the last few years have been at the request of the Friends group who also assist in general maintenance work and bulb planting. The Friends of Mayfield Park are also involved in park events and participate in the successful annual events held in spring and autumn. Events provide an ideal opportunity for the friends to increase their membership and promote their good work. The group also agrees an annual action plan at its AGM, detailing proposed tasks and activities for the coming year. This shows projects they wish to lead on, joint projects with the P&SC team and P&SC projects they might be able to assist with (see section 3.5). However at the time of writing, this plan has not been finalised as their AGM is not until end of January each year, but will be available for the judges to view at the site inspection.

Mayfield Park Bowling Club is affiliated to the local District, Hampshire County and National Bowling Associations, each of whom act in regulatory capacity for the sport of bowls.

The club currently has a membership exceeding 120 men and women, with this number being roughly in equal proportion. The bowling season spans from late-April until mid-September, during which time members become involved in a whole series of league and friendly fixtures as well as competition matches, whilst provision is also made for those wishing to play a more casual game.

Great effort is made to promote and foster lawn green bowling and anyone wishing to learn more about the game is welcome. Free tuition courses for the complete newcomer have long been held on a weekly basis, with an average of 50 or more hours having been spent on this project each season by a Club member.

An extensive newsletter has been produced over the past ten years and is issued three times a year. It endeavours to keep members informed of Club and bowling news; whilst prominence is given to events and developments affecting the Park.

During the course of 2009 the Club purchased a number of additional seats for use by the public to complete the formation surrounding the green. In addition a number of wooden flower tubs were installed along the front of the pavilion to enhance that area. Members are fully supportive of the annual 'Spring into Action' and 'Autumn's Harvest' events, during which bowling 'taster sessions' are provided and refreshments served from the pavilion building.

Mayfield Nurseries are a subsidiary of Solent Mind who work with people experiencing enduring mental health issues. Since 1994 the Nursery has been leased to MIND to form the Southampton Horticultural Therapy Project (SHTP). The aim of the SHTP is;

"to provide and develop a stimulating, flexible and socially accepted activity to suit the multiple and fluctuating needs of the long term mentally ill by filling an identifiable gap in the existing services for a community based therapeutic/work project."

The members of the Horticultural Therapy Unit in the nursery are active in the park, assisting in maintenance and planting of some areas. Members of the group have participated in work experience with P&SC staff, enabling them to increase their range of skills. Mayfield Nurseries are also key consultees for park developments and their ideas are included in considerations for the development of the park.



In the last year the group have made great efforts to bring the public into the nursery by providing refreshments and regular plant sales. The group plan to have at least three events in the nursery in the next year. A number of actions have been identified for Mayfield Nurseries working with the council in 2010 and these are reflected in the action plan in section 3.4. The nursery has its own website which promotes the facility and gives information about the project and opening hours www.mayfieldnursery.org.uk.

The Friends of Mayfield Nurseries was set up in 2007 to support the work of the nursery operating in the park. The aims of the group are to help promote the project within the wider community and to raise funds for equipment and facilities to benefit mental health service users attending the site.

1.3 Brief History

Mayfield Park was originally the grounds and gardens of Mayfield House that was built in 1854 by Robin Wright, after whom Wright's Hill was named. Robin Wright bought the eastern part of the Weston Grove Estate to build the mansion. The house was sited on what is now the Bowling Green. Between 1889 and 1937 it was owned by Lord Radstock.

On the death of Lord Radstock in 1937, Mayfield was sold to a developer. Lord Radstock's will stipulated that the grounds were to be retained as open space therefore the corporation bought the land for use as a Park. Council Minutes of the time state that the Estate consisted of;

“35 acres comprising mansion, lawns, kitchen garden, stables, entrance lodge and parkland with a large percentage of woodland. The park approximately 20 acres has been used as a sports ground and would accommodate 5 football pitches, 2 cricket tables after levelling. The remainder of the estate is undulating and sloping towards north-west. The mansion comprises 7 reception rooms, 23 bedrooms and offices. The gardens and lawns surrounding the house have been kept in fair condition.”

Initially there were varying plans as to what use could be made of the site to benefit the city. Council Minutes report that on the 24th Dec 1937;

“it was proposed that part of Mayfield estate be established as a botanical garden, the part of estate one and a half acres to the south west of walled garden (now nursery site) this area is surrounded by trees but exposed to the sun. It was felt that beds of British flora in families, herbaceous, perennials, biennials, annuals, alpines and certain shrubs could be laid out according to classification for educational purposes. Specimens could be obtained from Kew and Cambridge”.

Consideration to this proposal was postponed. Council Minutes show that 22nd June 1938 was the opening date for the Park.

Little changed over the next few years but in 1940 permission was granted for the installation of searchlights at Mayfield Park as the Park was on the main flyover route for aeroplanes approaching Southampton.

Mayfield Park and the former Mayfield House in the Background



Mayfield House was used for some time as a homeless hostel but was finally demolished in 1956, although the stable block is still standing. A stone monument, originally intended to be a fountain, was constructed in honour of Alderman W. Alford (1866-1938) and placed at the bottom of the steps leading from the house to the lawn area. This feature was installed in 1940, but later moved (when the pipe work was disconnected) to what became the far side of the bowling green in 1956, presumably when the house was demolished. The bowling green was developed during 1959 on the site, and it was opened on 30th April 1960 by Councillor E. K. Lyons (Chairman of the Public Committee). The original bowling green club house was burnt down in 2002 and has been rebuilt with modernised facilities.

The old walled garden was originally the kitchen garden for Mayfield House. Latterly it was used as a nursery for growing open ground nursery stock until 1975 when it converted to a container unit. In 1983 following construction of glasshouses, the new nursery opened with the production of bedding, and floral decoration being moved to Mayfield following the closure of the old Sydney House nursery. The nursery was closed in 1993 as it was no longer economically viable. In 1994 the site was leased to MIND for the creation of the Horticultural Therapy Unit.

A quote from the public lands committee 27th Jan 1939;

“R.C. Maughan applied for increase in pay, he is foreman and recently took the RHS certificate. The Parks superintendent reports that he is one of his best men. It was resolved to increase wages from 57 shillings to 63 shillings per week.”

1.3.1 Old Mill House

A water powered wood working mill was established in 1762 on the western boundary of the existing site. This was rebuilt as a house in the nineteenth century although it suffered from bomb damage in 1941 and was demolished in the 1950s.

1.3.2 Fox's Monument

Standing in the recreation area is Fox's Monument or the Obelisk. This was built as a memorial to the radical Whig politician Charles James Fox (1749-1806). His friend William Chamberlayne of Weston Grove Estate erected it in 1810 on the eastern part of the estate. In 1854 this part of the estate was sold to Robert Wright to build Mayfield House.

Recent research by the Friends of Mayfield Park group has uncovered a Friends of Bloomsbury Square in London. In Bloomsbury Square there is a Statue by Richard Westmacott of Charles James Fox as a monument to him. The Square also has Green Flag Award status and the Friends of Mayfield Park are keen to make contact and see if there are any shared opportunities and experiences.

1.3.3 Mayfield Park Bowling Club

During the mid-1950's three public bowling greens existed within the Town and these were situated at the Sports Centre, East Park and Millbrook. Whilst long held plans suggested that a similar facility might be constructed at the Veracity Ground, matters came to a head during the mid-1950's when Mayfield House was demolished and, on the initiative of a group led by a local eminent bowler, Howard Brouard, the matter was further addressed. The potential of this new site had much to commend it, for besides the attractive setting, many of those involved within this group happened to live in close proximity!

The Council helped to promote the cause and with work commencing on site shortly afterwards, the green was eventually opened as a public facility on 30th April 1960. In the meanwhile agreement had been reached with the Council that the recently created Mayfield Park Bowling Club would be granted access to the pavilion and major rights of the bowling green, whilst additional facilities remained for use by the public at large.

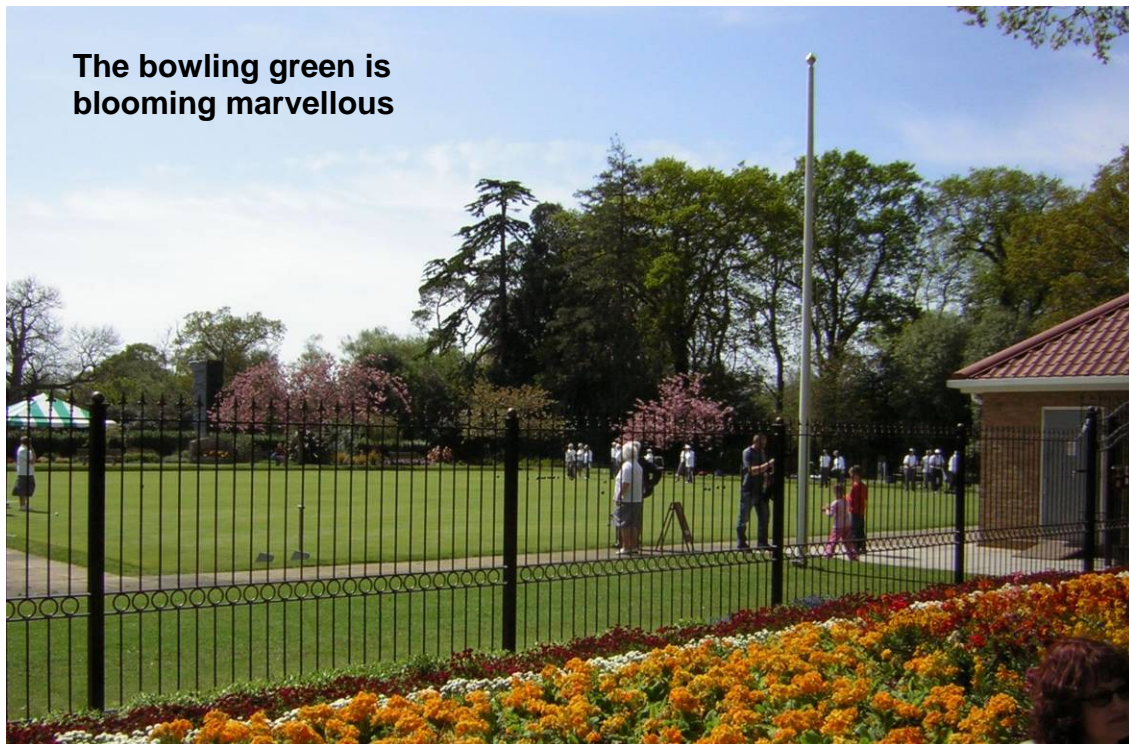
The Club has grown in stature since then and today is held in high esteem by those involved with the bowling world. It is noted for its friendliness, hospitality and general sense of fair play and with an excellent bowling surface, is often sought by individuals and other clubs alike, when needing to play on a neutral green. Members have represented Mayfield Park at National level in the past,

whilst more recently several have progressed to the finals of County and District competitions. In 2009 the Mayfield ladies league team gained promotion to the District's premier division.

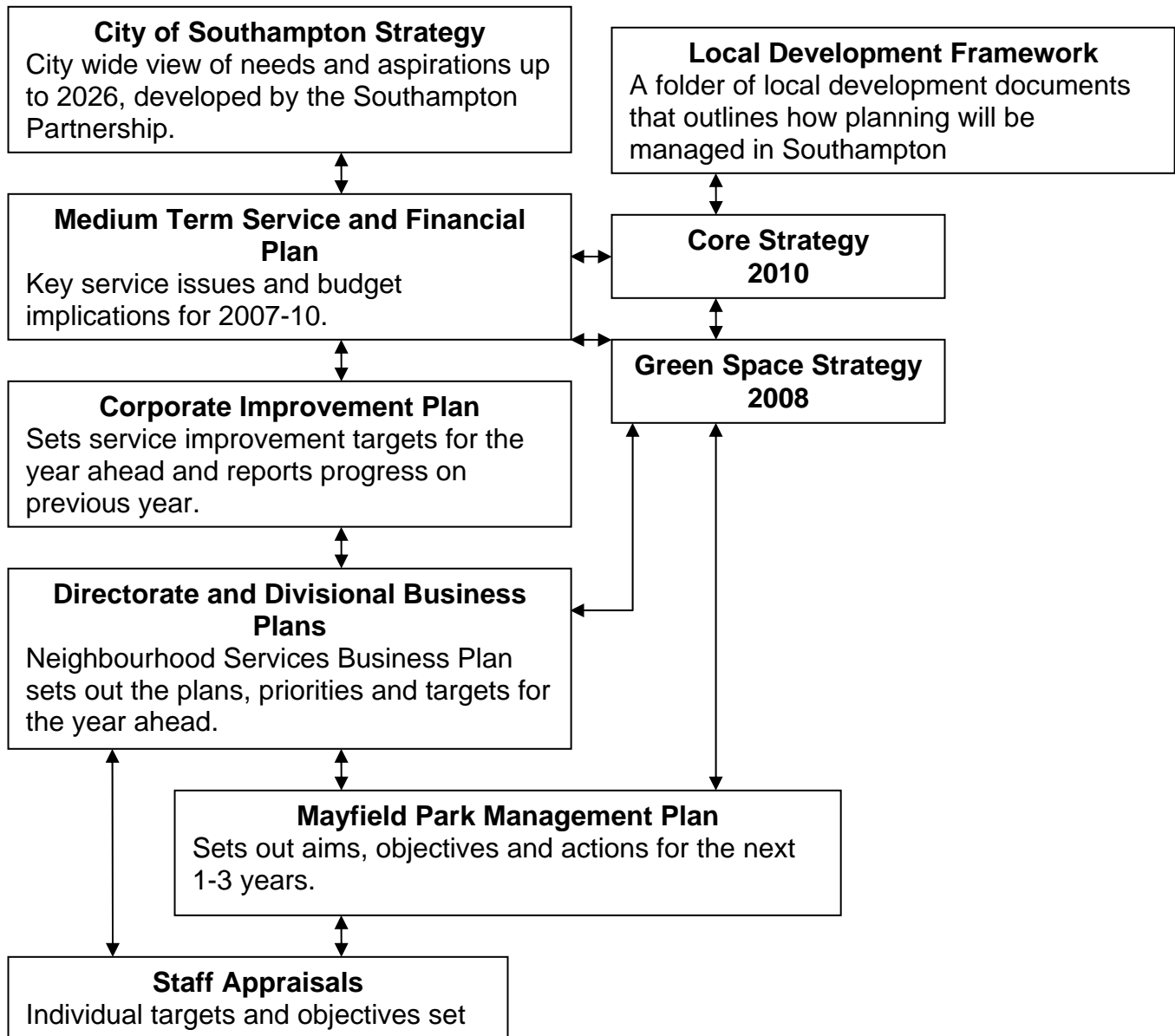
Membership levels are flourishing and the Club now has its highest combined total ever. This is attributed in part to the signing of a Partnership Agreement with the City Council in May 2000, when it undertook to accept responsibility for administering to those using the green.

With the destruction of the pavilion by arson in October 2002, the City Council were quick to respond. Through close collaboration the Club was given an opportunity of submitting a design for the new building, which was adopted in full and completed in the summer of 2003.

The Club continues to work closely with the City Council as also its counterparts, Mayfield Nurseries and the Friends of Mayfield Park support group, with its aim being to further progress the interests of bowling and facilities at Mayfield Park. *Contributed by Peter Ford (Honorary Club Secretary)*



1.4 Policy Context



The diagram above shows the golden thread of plans and strategies for Southampton City Council and shows how the Mayfield Park management plan fits into this. Southampton's Green Space Strategy was adopted in October 2008 and can be viewed at <http://www.southampton.gov.uk/gss>.

Southampton City Council has recently amended its priorities and six new key priorities have been identified. Mayfield Park supports these priorities in the following ways;

1. *Providing good value, high quality services*

Mayfield Park is freely available to all and areas of the park are fully accessible. We work closely with the various “Friends” and user groups to ensure a coherent management of the park for the local community. Mayfield Nurseries lease the walled nursery area and work in partnership with SCC to produce bedding and maintain the park.

2. *Getting the City working*

Mayfield Park is maintained to a high standard and contributes to the overall green infrastructure of the city making Southampton a more pleasant place to live and therefore encouraging both businesses and their work forces to want to locate in Southampton.

3. *Investing in education and training*

The Park provides a learning resource for the residents of Southampton through the programs provided by Mayfield Nurseries. There is also interpretation of the site through leaflets and a tree walk. There is great potential to establish a heritage trail.

4. *Keeping people safe*

Existing partnerships and close working with the local community, PCSOs and City Patrol helps to combat anti-social behaviour and build community cohesion. The annual events have given the local community a greater sense of ownership of the park and attract more people in, thus helping to reduce anti-social behaviour.

5. *Keeping the city clean and green*

Mayfield Park offers a green resource within the city improving its ability to adapt to climate change. It is part of the Shoreburs Greenway which extends from Bursledon Road to Weston Shore where it links with the Solent Way and the national cycle route NCN2 and therefore provides key strategic green infrastructure. Green waste within the park is recycled and this contributes to achieving this priority.

6. *Looking after people*

The park is very varied and has something to interest most groups. As it is quite large, the park attracts a wide range of people from the surrounding areas. Mayfield Park is a key green space for a large area of high density housing, therefore it has a vital role in improving those residents’ health and wellbeing. Mayfield Nurseries provide support and opportunities for a range of disadvantaged adults through working at the nursery.

There are a number of other city wide strategies and plans that directly or indirectly affect the management of the parks. The table below lists these with key areas of relevance to the management of Mayfield Park.

Council Strategy/ Plan	Key theme for management of Weston Shore
Southampton's Green Space Strategy (GSS)	The Green Space Strategy was adopted by Cabinet in October 2008. The strategy provides a classification of parks based on quality and standards. All park management plans link to the GSS. Key priorities include: <ul style="list-style-type: none"> • Increasing community involvement in the management and maintenance of green spaces • Encouraging more events and activities in parks • Increasing the number of Green Flag Awards across the city and using the criteria set out to inform future management plans.
Core Strategy	Has specific planning policy on enhancing and increasing green space provision in Southampton. As well as policies on climate change adaptation and green infrastructure improvement. The GSS acts as an evidence base for this document.
Biodiversity Action Plan	Protect, promote and improve biodiversity across the city, especially in relation to the woodland and greenway areas of Mayfield Park.
Street Scene Strategy	To improve the quality of streets, parks and open spaces across the city making Southampton 'smarter, safer, cleaner'
CAA (Comprehensive Area Assessment)	The CAA concluded that overall SCC performs well. Quality green spaces are included in the overall assessment of the area.
LAA (Local Area Agreement)	The Stronger, safer, communities block of Southampton's LAA includes a target for the achievement of Green Flag awards. Mayfield Park will be a key park in achieving this target.
Play Policy	Making play provision welcoming and accessible.
Neighbourhood Services Management Plan	A key overarching priority of the business plan is to make Southampton a greener city, specific commitments include; <ul style="list-style-type: none"> • Delivering the GSS action plan by identifying and prioritising further park improvements • Developing a green park code to include dog control orders. • Improving sustainability and climate change adaptations.

1.5 Service Standards

1.5.1 Service Promises

The Neighbourhood Services Division of Southampton City Council is responsible for managing, maintaining and developing Mayfield Park. The Park, in common with all of Southampton's parks and green spaces, is managed and maintained in line with a set of 'Service Promises' that define baseline standards of service that customers can expect to see delivered consistently across the city. The 'Service Promises' were developed in consultation with community groups and key stakeholders and are written in clear and non-technical language to enable all customers to easily recognise the standards of service they can expect to see delivered within their neighbourhood. The Green Spaces Service Promises are published on the Parks and Green Spaces page of the city council's website (www.southampton.gov.uk/parks). Compliance is monitored through ongoing monthly on-site inspections, with a target of >95% of sites visited maintained in line with the service's published standards. Performance results form part of the Divisional performance scorecard and are reported in the Neighbourhood Services Business Plan. Service Promises are included within staff's individual and team appraisal targets, with local performance reported and reviewed at regular team meetings.

1.5.2 Quality Audit

Park development needs and priorities are informed by user consultation and standards set out in Southampton's Green Space Strategy. This promotes audits to be undertaken to assess their current status and to give a baseline for future improvement and required investment. A quality audit of all of Southampton's Parks was undertaken by an independent consultant in Autumn 2009. The data collected was based on green flag criteria and gives a good idea of the areas where quality needs to be improved. The Audit also gives an idea of numbers and quality of seating and bins. Mayfield scored 66% in the audit giving a good basis for continued improvements.

1.6 Resources

1.6.1 Staff

The day to day management and maintenance is undertaken principally by the Mayfield Team within the Parks and Street Cleansing section of the Neighbourhood Services Division. Martin Willcox has recently become the East District Manager with responsibility for Mayfield Park. There are three part time staff and two full time members of staff who are all principally employed within the Park. Supporting Martin on maintenance and management issues is John Horton (Parks and Street Cleansing Manager) and with policy and strategic improvement issues is Nick Yeats (Trees, Allotments and Parks Improvement Manager). Mayfield is a training centre for NVQ candidates to hone practical skills such as bedding and bowling green maintenance and recently one of the trainees was shortlisted for the final of the APSE Apprentice of the Year Award 2009.

Neighbourhood Services has recently been awarded a grant to provide placements for Future Jobs Fund Trainees. This entails providing six month placements for people who have had difficulty finding work, giving them practical experience and skills to enable them to apply for jobs in the future. It is anticipated that 10 people will be taken on through this scheme across the Neighbourhood Services Division, with one employed in and around Mayfield Park.

1.6.2 Partner Resources

Mayfield Nurseries run the Southampton Horticultural Therapy Unit, which plant and maintain one of the seasonal display beds in the front lawn. They have also taken over the production of all bedding display plants within the park. Members of this group have successfully participated in work experience in the Park, which will continue in the future.

The Friends of Mayfield Nursery help to support the work they do and to promote this through events, leaflets and newsletters. They also cross over with the Friends of Mayfield Park group and Mayfield Park Bowling Club and all the groups support each other in their endeavours.

The Friends of Mayfield Park help to support the maintenance teams through reporting faults, litter picking and other physical maintenance tasks throughout the year. They are also often the eyes and ears on the ground and provide very useful feedback for any proposed improvements to the park. They continue to work closely with the P&SC team to coordinate their efforts.

The bowling green is managed in partnership with Mayfield Park Bowling Club, who re-invests income into the facility. Club members operate the Attendant's Office throughout the season to assist members of the public wishing to play bowls. Whilst the premises are wholly owned and maintained by the City Council, it is furnished throughout from resources supplied by the Bowling Club, whose members also maintain the internal decoration as required. The building is accessible for more general use throughout the close-season period, when it is often used for meetings by the City Council, Friends of Mayfield and other associated groups.

1.6.3 Finance and Budget

At the time of writing, the budget expenditure forecast for Mayfield Park for 2009/10 is as detailed below.

Activity	Forecast expenditure 09/10 (£)
Grass 09/10	13500
Litter/Leaves 09/10	19300
Shrubs/roses/hedges 09/10	32500
Sports facilities 09/10	16100
Flower beds 09/10	22400
Play areas 09/10	600
Infrastructure repairs and maintenance 09/10	6000
Football Pitch Maintenance 09/10	9200
Events	8000
GF Improvements	8000
Total	135600

The expectation is for spending to continue at proportionately similar levels during 2010/11, but this is contingent on an as yet incomplete corporate budget setting process. The Parks team will be provided with the 2010/11 budget information in March to enable them to plan in detail the expenditure over the period April 2010 to March 2011.

In addition to the above, approximately £27K of the parks capital budget was allocated to Mayfield Park to fund improvements during 2009/10. This included refurbishing the sleeper steps connecting the more formal part of the park to the sports pitches and greenway, and new fencing along Weston Lane.

Through the council's partnership with Groundwork Solent, a bid is currently being developed for the Access to Nature funding stream for £100K. If successful this will involve providing a volunteer coordinator for three years to provide volunteering opportunities in Mayfield Park and the adjacent Shoreburs

Greenway. The first phase bid will be submitted by February 2010 and if successful the second phase bid will be made by May 2010. The volunteering works will be aimed particularly at those physically and mentally disadvantaged, but will also be open to all local residents. It is therefore anticipated that the Friends groups will have a great part to play in its successful implementation.

1.7 Community Involvement

Mayfield Park benefits from having an effective partnership approach to its management. Strong links with the Bowling Club, Mayfield Nurseries, the Friends of Mayfield Park and Friends of Mayfield Nurseries have enabled development plans to progress with greater speed and local community involvement. The four groups are very different and have different interests in the park but do all complement and support each other. It is important to maintain good working relationships with these groups but equally important to recognise their differences.



1.8 User Feedback

Southampton's parks are frequently identified as one of the most important factors in making the city a good place to live. The most recent Place survey conducted by MORI in late 2008 indicated that overall satisfaction with parks and green spaces was 76%. This places Southampton in the top 25% of all local authorities.

Southampton actively promotes the national GreenSTAT online survey hosted by Greenspace. Although details are included in all our publications and promoted via the council website and at events, we have only had a limited response from the public. The promotion and use of this service will be reviewed in the near future to hopefully encourage more respondents. The majority of comments made about Mayfield Park are positive and complimentary to the Friends and park staff;

"The park is only part of this area - it has woods alongside and "Friends of Mayfield" do a lot to protect the environment."

"This is not a "play park" but one that has a great variety of trees and plants to enjoy."

Only one comment has been made that requires a response from the P&SC team;

<i>You said...</i>	<i>We did...</i>
"Not able to walk very far without a rest, more seats would be appreciated"	Additional seats have been installed by the Bowling Club and the independent green space audit reviewed the provision of seats and bins. The results of this audit will be used to address any gaps in provision in consultation with user groups.

A further action for 2010 will be to ensure that GreenSTAT is promoted more widely to Mayfield Park users especially at events and through the Friends, Bowling Club and MIND.

A Mayfield Park stakeholder group meeting was held in December 2009 to review the Green Flag Management Plan and to identify actions to include in the 2010 update. The stakeholder group included representatives from the Friends of Mayfield Park, Mayfield Nurseries and the P&SC team. Input from the Bowling Club was received through written comments and this was also incorporated into the new plan. Tasks were allotted for each person to contribute to the writing and a joint effort has been made to bring it all together.

The Friends groups have reported back to P&SC staff that they have received a lot of positive feedback about the autumn event which included a seed collecting walk.

Chapter 2 - Management Strategy

2.1 Vision

For Mayfield Park to be a beacon neighbourhood park for the rest of Southampton, which is relevant to local people while hosting events of regional significance. Working with the community to uncover the Parks history and providing learning and development opportunities as a centre for NVQ training and assessments.

2.2 Aims

Mayfield Park has a distinctive local character serving a range of functions for local people. The recognition and enhancement of this character is as essential to the development of the park as the maintenance of the individual components that make up the Park. There are four broad aims for the management, in partnership, of Mayfield Park identified in accordance with the City of Southampton Strategy, Green Space Strategy and other city plans;

- Retain and enhance the distinctive quality of the park
- Provide a service that meets and continues to meet user need, both locally and strategically through the objectives of the City Council
- Interpret and promote Mayfield Park to ensure the benefits it offers are maximised
- Ensure the park is accessible to all elements of the community.

2.3 Specific Objectives for 2010/11

The following key objectives have been derived from the Green Space Strategy, the draft Neighbourhood Services Business Plan¹ and customer feedback and provide a focus for management in 2010/11. Specific actions to address these objectives are identified in the action plan in section 3.4.

- To maintain a balance between formal parkland, woodland and biodiverse areas, enhancing the characteristics of the Park
- To increase customer satisfaction in Mayfield Park.

¹ Business Plans are finalised in March after the budget setting process.

- Continue to work closely with the Friends of Mayfield Park, the Bowling Club, Mayfield Nurseries, the Friends of Mayfield Nurseries and other community groups to further increase community involvement.
- To continue to provide and promote an exciting range of events in Mayfield Park, raising environmental awareness and increasing community involvement.

2.4 Management Structures

The management and maintenance of Mayfield Park is the responsibility of the P&SC Team. The P&SC team is within the Neighbourhood Services Division of Southampton City Council. The division includes Active Communities, Stronger Communities, Safer Communities, Major Projects and Trees, Allotments and Park Improvements. A structure chart of the teams directly involved with the management of the park can be found in appendix 2.

In December 2007 the Outdoor Recreation team joined Neighbourhood Services from the Leisure division resulting in Neighbourhood Services now being responsible for the maintenance and management of the whole of Mayfield Park including the formal playing pitches. Previously the recreation area of the park was managed under the Leisure/ Outdoor Recreation section. This was not only confusing for the public but also led to differing maintenance regimes and standards across the park.

Managers within Neighbourhood Services undertake MBWA (management by walking about) which includes visits to Mayfield Park. The District Manager is the main link between staff on the ground and senior management. Quarterly meetings are held with Neighbourhood Services management and the District Manager to monitor progress on the action plan.

2.5 Green Space Policies Relating to Mayfield Park

There are a number of operational and management policies covering open spaces and the whole city that have particular relevance to Mayfield Park as detailed below.

2.5.1 Bowling Green

The Bowling Club members are responsible for the day to day management of the green and club house and the P&SC team maintain the green to a high standard. Maintenance of the club house is the responsibility of the Property Services division within the council. They are responsible for all buildings within the park and any maintenance issues are reported to them by the park team.

2.5.2 Health and Safety

All activities undertaken by the City Council in Mayfield Park are subject to risk assessment. The Neighbourhood Services Division has over 300 risk assessments in place covering the range of the teams work. Generic Risk Assessments are in the process of being put on the SCC intranet pages and are also held in the staff room at the stable block as hard copies. The Friends of Mayfield Park have also been trained to carry out risk assessments before undertaking any work.

The play area is inspected on a daily basis to ensure that equipment is safe and that the immediate area is suitably clean. Any faults are immediately reported to the city play area maintenance team. Neighbourhood Services Division are currently undertaking an appraisal of “mobile working” procedures, with a view to improve our working practices and make them more efficient. We are currently looking at software and hand held hardware that will enable us to carry out play area inspections and record the results without having to return to the office. It is anticipated that this project should be complete during 2010/11.

Damage or maintenance issues regarding bins, seats and signs are reported during the daily check of the park by the on site staff. Any health and safety issues are dealt with immediately and other repairs are undertaken by staff as needed. In the last year, seating at the bowling green has been maintained by club members.

In addition to on site park staff, City Patrol and Police Community Support Officers (PCSOs) carry out patrols within the park to improve the perception of safety and provide a visible presence to deter anti-social behaviour.

2.5.3 Enviro-crime and cleanliness

Litter, broken glass and offensive graffiti are removed at the time of the daily inspection or within 4 working hours of being reported. Non-offensive graffiti is removed within 1 working day if it can be removed by the Mayfield staff. The Council has a proactive approach to the removal of graffiti and fly posters on land it manages. There are two specialist reactive teams ready to respond to the more severe graffiti problems. Non-offensive graffiti will be removed by the specialist team within 5 days and offensive graffiti within 24 hours. Additionally protective coatings are applied to features regularly targeted facilitating rapid removal, and training and equipment is issued to key partners to enable them to tackle graffiti quickly.

A team of City Patrol Officers cover the whole of Southampton patrolling the streets, parks and open spaces seven days a week. During the day they deal with enviro-crime and issue fixed penalty fines for dog fouling, flytipping, graffiti and littering. This helps to reduce the negative impact of litter and dog fouling in

particular. In the evening the role of City Patrol officers is geared towards dealing with anti-social behaviour, which can involve them patrolling parks and green spaces. Any occasions of vandalism are reported to the District Manager and repairs are carried out as soon as possible.

2.5.4 Sustainability

The P&SC team recycles all green waste produced and this applies to the green waste generated by Mayfield Park. Green waste from the park and surrounding areas is collected on site and shredded for use as mulch where possible. This mulch is used in the park to suppress weeds, condition the topsoil, and retain moisture and nutrients.

This approach reflects the parks team's general policy in terms of waste disposal, which is to ensure waste is collected, processed and disposed of in as sustainable a way as possible, with minimum carbon emissions. In practice this means that where feasible green waste is directly recycled at the point of origin. Where this approach is not viable, as next best option green waste is taken to the council's nearest recycling bay for composting and future re-use within the city's green spaces. All green waste generated within Mayfield Park is disposed of through these methods, either through chipping directly back onto the site of origin or composting within the park's on-site recycling bay.

Unfortunately the council's current overall recycling capacity means that not all green waste produced from the city's thousand plus hectares of green space can be processed in-house, so as the final option the council works with out of city contractors to collect our excess green waste and compost off-site. To minimise unnecessary travel, the delivery of recycled compost is coincided with the collection of fresh green waste taken off-site for processing.

Presently litter bin waste from Mayfield Park is taken to a local energy recovery facility which recovers heat energy from waste. This heat energy is used to generate electricity for the National Grid. Therefore, of the hundreds of tons of green, inert and mixed waste collected and produced by Riverside Park, it all gets recycled in some way.

A pilot to trial dual use recyclable/general waste bins commenced in late 2009 in the city's Central Parks. The success of this pilot and future roll-out across the city will depend on the degree to which contamination of recyclable waste can be avoided. This consideration is particularly pertinent as currently our general waste parks bins are used to dispose of both litter and bagged dog faeces, a policy that has helped significantly reduce the amount of dog fouling found on site over the past five years.

The City Council operates safe working practices to ensure that all pesticides, herbicides and fertilisers are properly applied. The purpose of these procedures

is to ensure that all relevant legislation is followed and that records are properly kept and maintained. The Council aims to minimise the use of chemical products and actively seeks alternative approaches where possible. Should there be no alternative to chemical usage then products are selected from an approved list, preventing the use of environmentally unfriendly products.

In Mayfield Park, the use of Casoron G has stopped and wherever possible the use of other pesticides is being reduced to a minimum. Glyphosate based herbicide is used for Japanese Knotweed control and on rare occasions for control of weeds under features, such as benches, where manual weeding is not possible. Wherever possible new features are designed in such a way that either it is acceptable to have weeds/grass adjacent to them or they are constructed in a way with a base that will stay weed free. We have also reduced the amount of chemical use on the bowling green by the use of improved cultural methods.

The team are also working with Mayfield Nurseries to encourage them to reduce the amount of peat that is used in their nursery plant production. Several trials have been undertaken but no suitable substitute has been found yet. New products will continue to be trialled to see their effectiveness in plant production.

Any timber used within the park is either from trees cut down in Southampton, as part of the tree surgery contract, or from sustainable FSC certified sources.

2.5.5 Conservation and heritage

It is important that the unique characteristics of Mayfield Park are maintained and that the local history is preserved where possible. Site meetings with the Council's ecologist have been undertaken in 2009 and will continue. A biodiversity action plan has been drawn up and will be built on in 2010 to maximise the potential of both the formal and natural environments within Mayfield Park;

Improvements for Biodiversity 2010

Background

The site is part of the Shoreburs Greenway and is an important component in the wildlife corridors provided by the Shoreburs and Weston Greenways and Weston Shore. In recent years there has been extensive regeneration of the formal gardens forming part of the site. This fact and the sports fields/play areas along the Weston Lane side of the site have led to the main wildlife interest being along the western edge. The old carriage way along the valley from the bottom of Wrights Hill was reopened recently and now forms part of the Millennium Butterfly walk.

Management concerns

Increasing formalisation of some of the area has led to the loss of some wildlife habitat and the potential of cultivated plants affecting the adjacent natural areas.

Increased public access has resulted in further disturbance and pressure on the remaining areas. The use of limestone for path repairs is also potentially damaging in a naturally acid area. Over tidying and insufficient/inappropriate management has resulted in a loss of the edge habitats that are particularly valuable for wildlife.

Opportunities for improvement

There is scope for further pond creation along the edge of the “new” carriage drive. Creation of glades along this feature and further down the stream would increase diversity and benefit butterflies, including White Admiral and Silver washed fritillaries that are very scarce in Southampton. Reduction of mowing at the top of the bank adjacent to the sport fields and removal of tree saplings that have grown up along these banks and shaded edge areas of wildlife importance, particularly acid scrub species. Continued removal of invasive Laurel and Rhododendron from the woodland banks, although care needs to be taken not to open up the area so much that it becomes eroded by public pressure.

In the short term the following actions have been identified:

Excavating short lengths of the ditch running along the carriage drive to create linear ponds and reduce flooding across the path (it is planned to do this to different bits each year, effectively a “coppice cycle” of ditch maintenance).

Coppice willow etc. to form glades adjacent to the wet areas (“ponds”) along the carriage drive.

Stop mowing bank sides near playing fields, coppice/remove encroaching saplings to encourage scrub species such as Gorse and Hawthorn. Reduce mowing along the top of the bank adjacent to the sports pitches, using graded edge technique to maximise variety in vegetation length and flowering time.

Clear dense shade adjacent to old steps near Weston lane end of bank to encourage ground flora and more wildlife friendly native species (these steps are no longer needed as the nearby path has been improved for access to this area).

Heritage

The heritage and historic value of Mayfield Park has been explored with local residents through a Memories of Mayfield Park event. Local residents brought along their pictures and stories of the history of the park. The Bitterne Local History Society takes an active interest in the park and holds a lot of information in the Nursery. Several of the Mayfield Nurseries members have an interest in the history of the park and keep historical press cuttings of events gone by. All the partners agree that a project for the future is to bring together their combined knowledge and information to develop a heritage trail within the park and nursery.

The plans for the Park Lodge will be based around conserving the building and maintaining its historical features where possible.

Property Services are responsible for the Bowling Green Pavilion, stable block and elements of the Nursery site at Mayfield Park. They carry out annual inspections of these buildings and any necessary maintenance. The Ancient Monuments Officer also regularly inspects monuments. The District Manager directly reports any repairs that are required to Property Services and this is then prioritised according to the nature of the repair and timescale agreed. Annual inspections are carried out for both electrical and fire safety equipment and the results recorded in the central parks office.

2.5.6 Marketing

The council has adopted a 'campaign' method of managing communications to focus and prioritise marketing and to ensure consistent messages are given to the public. Several key campaigns have been identified which will include opportunities to promote Southampton's parks. In particular the **City Pride campaign** - promoting park events, positive messages about our parks, improving perception; **Volunteering campaign** – promoting opportunities to get more involved in your local park and volunteer to help make improvements; and **Highlight green credentials campaign** – the value of parks and green spaces in climate change adaptation and improving biodiversity. These campaigns will be high profile and will be used to deliver a number of key messages about all our Green Flag parks and will hopefully encourage more community involvement.

As indicated in the Green Space Strategy and Neighbourhood Services Business Plan, a key objective for the year ahead is to promote parks as a vital resource for enhancing the health and well-being of their visitors. Mayfield Park serves a large area and is appreciated by a wide range of users.

Mayfield Park is publicised in a number of ways. All events are published on the Council's website and in posters and leaflets. Adverts for major events are placed in local press and we produce press releases for all park events. In addition to the information boards at the Weston Lane entrance and by the Bowling Club, Mayfield Nurseries have an information board near the nursery entrance and the Greenway entrance has information about the Butterfly Walk. Four notice boards were made for the park by volunteers working with a wood sculptor at a Natures Harvest event. The boards are used to display information about events, the friends group and any other community information. Further signage was introduced in 2007 through new notice cabinets at key entrances.

The online GreenSTAT user survey is also available as a key tool for gaining customer feedback on Central Parks and other green open spaces. Links to GreenSTAT can be found on the council website and it is promoted in leaflets and other publications.

This is all supported by the Mayfield Nurseries group website that promotes the Mayfield Nursery specifically and includes information about their events and opening times (www.mayfieldnursery.org.uk).

2.5.7 Trees

A system of tree management known as Southampton's Tree Risk Management Strategy (STORMS) is in place across the city. This ensures that council owned trees are inspected on a frequency determined by the potential usage of the area in which they are situated, and their own potential to cause a hazard. Trees in Mayfield Park will be subject to an inspection at least every five years, with some high risk trees inspected annually. The park was surveyed in January 2008 and subsequent works carried out.



2.5.8 Park Lodge

A key action for 2009 was to appraise the options for the Lodge and get a political steer from the Cabinet Member to decide the future use of the lodge. A briefing paper was taken to the Cabinet Member on 6th May 2009 outlining three options;

1. To turn the Lodge into a café/ heritage building
2. To renovate the property back to habitable standard and restore the tenancy
3. Convert the building to offices to accommodate staff moving from other Council sites.

Option 1 was dismissed as Mayfield Nurseries already have a successful café and it was considered not viable to have two on site. Option 3 was dismissed as other options for offices became available. This left option 2 which still left the cost of the refurbishment to be found.

However, since the briefing the Council has undertaken a review of all of its property and the Lodge has been identified as a building that could be disposed of from the corporate portfolio. We are therefore working closely with the Council's valuation department to ensure that the best price for the site is accomplished and where possible the capital receipt money is made available for improvements to the park. The exact details of any sale are yet to be agreed.

Chapter 3 - Actions and Recommendations

3.1 Measuring Success

Recent progress over the last year set within the Green Flag criteria provides a good means of measuring how successful we are. The list below highlights the most significant achievements made in the park and also includes key achievements made by the Friends of Mayfield Park, Mayfield Nurseries, Friends of Mayfield Nurseries and the Bowling Club.



Friends & staff collecting the Flag in Bournemouth 2009

Welcoming place

- Uses for the Lodge have been explored and briefed through Cabinet Member Briefing. However, a corporate project has identified the Lodge as a potential property that could be sold for capital gain. This could have benefits for the park and would reduce the Council's liability for the Lodge.
- The access into the more formal park from the recreation ground up some steep sleeper steps has been redesigned and will be implemented throughout spring 2010 using a mixture of Future Jobs Fund work force, in house work force and a local blacksmith to make the railings (this was a specific recommendation from the judges).

Healthy, safe and secure

- Works to a culvert down stream from Mayfield Park have been completed by Highways and this should reduce the risk of flooding along the greenway footpath.
- After protracted negotiations with Southern Water it looked that a solution to the issue of the sewage drainage pipe manhole covers blowing in periods of high use was near, however, we have recently found out that the works have not now been put onto the next three year work program. SCC will be continuing to lobby Southern Water to get this issue resolved, but in the mean time are looking to move footpaths to ensure people are kept away from the problem.

Clean and well maintained

- A program of improvements for seating and bins was completed and implemented during 2009, with the Bowling Club taking a key role in fund raising.
- A quality audit of all of Southampton's Parks was undertaken by an independent external consultant. The data collected was based on green flag criteria and gives a good idea of the areas where quality needs to be improved. The Audit also gives an idea of numbers and quality of seating and bins. Mayfield scored 66% in the audit giving a good basis for continued improvements.
- Friends undertook further footpath clearance over the last year and plan to do more in the future.

Sustainability

- Water butts and a new irrigation system have been installed into Mayfield Nursery, making water use more efficient and therefore helping to reduce water consumption.
- A third phase of clearance around the existing carriageway has been undertaken. Both the Friends and the Future Jobs Fund Trainees have been involved in this clearance.

Conservation and heritage

- The Nursery Wall has been temporarily made safe through the installation of a barrier to prevent people gaining access to it.
- Biodiversity action plan identifying key areas of the park for different habitats and agreeing appropriate management regimes has been written and incorporated into this management plan. This will be expanded upon in the future.

Community Involvement

- As part of this years "Nature's Harvest" event the Friends, Mayfield Nurseries and the SCC Tree Team held some seed collection walks with people attending the event. A large number of native seeds were collected from Oaks, Rowan, Hawthorn, Birch and Beech and Mayfield Nurseries are now germinating them and growing them on in preparation for a tree planting event in 2011.
- Mayfield Nurseries successfully supplied all the bedding plants for the park in 2009/10.

Marketing

- Web pages have been updated to provide more information and Green Flag management plan. Events are promoted by the 'what's on' pages and there is also a link to GreenSTAT. Unfortunately the Friends web site has been discontinued. The Friends have asked for SCC help to develop a new site.
- The Mayfield Nurseries website has been developed to include lots of information about the nursery project and events.

Management

- Stakeholder meeting was held to gain input into the management plan, follow up work from the Friends, Mayfield Nurseries and the Bowling Club has provided valuable information for the management plan.
- Stakeholder meeting held to explore the opportunities for funding through the Access to Nature funding stream. A wide range of stakeholders attended, including local General Practitioners, Hampshire Wildlife Trust, and Local Voluntary Organisations.
- The Bowling pavilion has continued to be used by SCC for various meetings, including Senior Management away days, Parks Development business planning and Southampton in Bloom meetings.

The Friends of Mayfield Park also undertook 7 very successful events with good turn outs to all of them. Below is their record of the events.

Date	Event
21 March	General litter pick at Archery ground end of park
25 April	Spring into Action event. Held a drawing competition for children in various age groups to the title of "My Park" plus a well supported raffle.
6 June	x16 Himalayan balsam clearance. Due to the floods over the previous weeks nature had done a major job on reducing the level of this invasive annual weed. The hunt to pull this weed up also enabled a good litter pick into the bog area. It is great to see more native plants begin to make some headway in this area after two years of reducing this weed
25 July	x9 Picnic around the obelisk. Though few people were at this event it was a pleasant gathering though not so relaxing as it unknowingly clashed with a Chamberlayne event with the field being used as a car park so was fortunate our event was not well attended from a safety point of view.
3 October	Natures Harvest event. Part one of a planned two part activity began with several forays to collect tree seeds with the Tree officers. The native trees from the park were then handed over to Mayfield nursery along with funds raised from the raffle, approx £67, to cover cost of growing on the seedlings. The intention is to replant the trees in the park in 2011. A drawing competition saw the best pictures laminated & on display in the nursery alongside an explanation on this joint project.
23 January	AGM & social



3.2 Programme of events for 2010/13

Having such a varied user base, Mayfield Park has to meet the needs of many groups. Over the next three years the park will host a number of events. Some of these will be planned and delivered by other stakeholders in partnership with the Council. We will also be hosting some events of our own with help from the Friends groups, Mayfield Nurseries and the bowling Club.

Typical events over the next three years will include:

- Spring into Action
- Spring Garden Walks
- Community Fairs
- Mayfield Nursery open days
- Walks, talks and activities to educate and inform people of the biodiversity and heritage.
- Natures Harvest autumn event
- Fungal forays



The Friends of Mayfield Park also have a programme of events and activities for the year ahead which links to the programme of events developed by Neighbourhood Services. Unfortunately, at the time of writing this management plan the Friends group had not finalised the plan for 2010. This will be discussed further at a specific meeting held in the spring. However, it is likely that the

following events will take place throughout the year and these will be arranged by the Friends, in consultation with the District Manager.

- Detailed planning on the year ahead – who's leading which elements
- Litter picks and park tidy ups
- Spring event (theme to be agreed)
- Pull out and remove Himalayan Balsam and general litter pick/stream clearance
- Walk/Talk and Picnic in the park
- Continuation of path clearance at Barnfield Close to establish Circular walk
- Autumn Event (potential for bird box making and hanging, early seed collection)
- AGM & Meeting to plan year 2010/2011 plus social evening

The full range of events are advertised through parks posters and on the "What's On" pages of Southampton City Council's Web Site

www.southampton.gov.uk/whatson

3.3 Maintenance schedule

Appendix 1 shows a map of Mayfield Park identifying the various maintenance standards and regimes. The areas are colour coded and the key explains the frequency of visits.

A typical day for the team in Mayfield Park involves a number of daily routine tasks;

- Early morning litter pick
- Emptying litter bins
- Play area inspection
- General check of the park – including inspections of seats, bins and signs. Any damage or vandalism is identified and reported for follow up inspections / repair / maintenance as required
- Responding to queries from members of the public

In addition other maintenance tasks are;

- Mowing (at various frequencies as per maintenance map and performance standards)
- Bowling Green maintenance (variety of fine turf tasks undertaken throughout the year)
- Pitch marking as appropriate for bookings
- Seat and bin maintenance – annual refurbishment visit plus occasional one off visits to respond to issues of cleaning / repair.

- Flower and shrub bed maintenance –
 - daily litter visits
 - monthly shrub visits to control weeds and undertake minor pruning,
 - weekly flower bed visit to control weeds, replace / remove damaged or fading material and hoe out footprints
 - seasonal maintenance visits to undertake specific pruning and replacement plant infilling
 - flower beds planted with summer bedding displays and winter / spring displays (grown by Mayfield Nursery)
 - General management of identified biodiversity areas.
 - Autumn leaf clearance

Football pitch marking is carried out once per week from September to April and nets are put up on Friday and removed on Monday to accommodate the weekend football leagues. Each football pitch is played on average twice a week.

Seating at the Bowling Green is now maintained by Bowling Club members.

During the winter when the amount of general maintenance is reduced the team are able to work on alterations and improvements to the park and surrounding woodland.

The Mayfield team work to the P&SC Service Promises and sports pitch specifications which reflect performance standards rather than purely frequency measures. Details of these service promises and standards can be made available to the judges during the field assessment.

3.3.1 Equipment Maintenance

Equipment is maintained by the councils fleet transport team – there is a dedicated mower service section looking after the larger grass cutting equipment and minor maintenance is undertaken by the Mayfield staff as part of the daily equipment checking routines.

3.4 Action plan for 2010/2013²

This action plan is a working document that is reviewed and updated annually. Some proposed actions are aspirational and will depend upon sourcing adequate funding, in collaboration with the Friends of Mayfield Park, Nursery, Bowling Club and other interested groups. Although the plan has been ordered according to Green Flag criteria, several of the actions fall under more than one. This year's amendments can be found in bold type, where a major milestone has been reached or a project completed it will feature in the recent progress section above.

Action	Lead officer	Key partners and consultees	Estimated resource required and source of funding	Target Completion date	Comments
<i>Welcoming Place</i>					
Improve Greenway Footpaths along North West Boundary of park.	Nick Yeats	Groundwork Solent	Access to Nature Grant Fund	April 2013	
Update signage to reduce clutter and promote park.	Cliff Brown	Mayfield Nurseries, Bowling Club	£5000 – Developer Contributions	December 2013	Early designs complete awaiting funding to implement
Investigate feasibility of diverting path along the greenway to avoid sewage drainage pipe (need to consider implications for biodiversity)	Simon Buston	Andy Welch, Martin Willcox, Groundwork Solent	Officer time and Unknown cost	Dec 2013	Despite persistent requests to Southern Water the problem has not been fixed, therefore diverting path is a temporary solution. Feasibility will include sourcing funding.

² This action plan is for the period 01.01.10 onwards therefore some actions may be complete prior to the judges' field assessment. However the action plan contains some actions that will be completed after the life of the plan.

Action	Lead officer	Key partners and consultees	Estimated resource required and source of funding	Target Completion date	Comments
<i>Healthy, safe and secure</i>					
Carry out an access audit across the park to ensure that the Park is fully accessible where possible and appropriate	Martin Willcox	Simon Buston, Adrian Crook, Friends groups, Bowling Club and Mayfield Nurseries.	£2,500	March 2011	Access audit for the greenway was undertaken & “honey pot” areas identified. The area adjacent to Mayfield Park is deemed to be challenging for all but able bodied people - costs currently prohibit improving this situation. If successful, the Access to Nature bid will include a programme of works over three years to provide volunteering opportunities for physically and mentally disadvantaged people. A further audit of the rest of the park needs to be undertaken and will be arranged for 2013/14.
Establish greater links with the local PCSO's through park and area safety meetings.	Martin Willcox	Friends groups	Staff time	December 2010	COMPLETE
Explore and agree solution to parking issues on main driveway	Martin Willcox	Nick Yeats, Mayfield Nurseries Lodge Owner Bowling Club Local Councillors	Staff Time	September 2013	

Action	Lead officer	Key partners and consultees	Estimated resource required and source of funding	Target Completion date	Comments
Open up sight lines from the Ornamental Lawn towards Weston Lane	Martin Willcox	Friends of Mayfield Park, OS team, City Safety	Staff time £10k for replacement railings	December 2013	This suggestion from the judges was at first dismissed by the friends group for reasons of lost privacy and tranquillity, however, more recent discussions have highlighted that this could now be a viable option and we will look into implementing it within the next 12 months
<i>Clean and well maintained</i>					
Expand role of Mayfield Nurseries in maintaining some areas of the park, for example pruning and planting of shrub beds.	Martin Willcox	Mayfield Nurseries	Officer time	Ongoing	Change in staff numbers has made the expansion difficult as staff to client ratios need to be low for this type of work. However, SCC staff are still keen to provide opportunities for working in the park.
Feasibility study to provide pond at Archery Grove end of the greenway	Nick Yeats	Martin Willcox,	Est. £15k, Officer time	October 2013	Following renewal of the culvert under Archery Road, a pond up stream could potentially help to prevent the culvert becoming overburdened and reduce the risk of flooding in the greenway.
Renew fencing along Weston Lane	Graham Pugh	Fencing Contractors, Nick Yeats	Est £17k	April 2010	The fencing along Weston Lane which borders the football pitches has fallen into disrepair. This will be renewed this spring
Renovation of the area around the Obelisk, with new interpretation.	Martin Willcox	Local Residents Park users Local Councillors	Est £5k, Officer time	July 2013	To be discussed with stakeholders

Action	Lead officer	Key partners and consultees	Estimated resource required and source of funding	Target Completion date	Comments
Agree to best solution and getting cost for improvements to access driveway to Mayfield Nursery and Lodge	Richard Cross	Nick Yeats, Mayfield Nurseries, Owner of the Lodge, Local Councillors	Part funded by stakeholders, part funded by Parks stewardship budget.	September 2013	
Sustainability					
Work with Mayfield Nurseries to reduce the use of peat in Nursery plant production.	Adrian Crook	MIND	Officer time	Ongoing	Trials have been ongoing with very poor results so far. Investigations into alternatives are continuing. This has run its course with the Nursery trying new mediums whenever possible, but still returning to peat.
Plant trees grown from local seed source back into Mayfield Park	Nick Yeats	FOMP, FOMN, Mayfield Nurseries	Mayfield Nurseries time, Officer time	December 2011	Seeds collected at Natures Harvest have been grown by the nursery and will eventually be planted in the park. Planted back into local school as part of Trees for Life planting
Continue active management of carriageway and woodland edge.	Martin Willcox	Friends of Mayfield Park, Andy Welch	Est £500 plus Future Jobs Fund Trainees and Officer time	Ongoing	This area needs ongoing maintenance and is a good opportunity for the local community to get involved in the park.

Action	Lead officer	Key partners and consultees	Estimated resource required and source of funding	Target Completion date	Comments
<i>Conservation and heritage</i>					
Explore solutions to making safe the Nursery Wall	John Horton	Building services & Mayfield Nurseries, FOMN, FOMP	£20 - 30K estimate	April 2011	The preferred option is to remove the offending section of wall. This could give the opportunity for Mayfield Nurseries to expand into the area behind the wall, although security needs to be carefully considered. The FOMP have also asked to be involved in the design, and have suggested that the finished design should allude to the existence of the nursery wall.
Excavate short lengths of the ditch running along the carriage drive to create linear ponds and reduce flooding across the path	Martin Willcox	Andy Welch, FOMP	Est £500 per ditch plus Future Jobs Fund Trainees and Officer time	Ongoing on a five year rotation	It is planned to do this to different sections each year, effectively a "coppice cycle" of ditch maintenance.
Coppice willow etc to form glades adjacent to the wet areas ("ponds") along the carriage drive.	Martin Willcox	Andy Welch, FOMP	Future Jobs Fund Trainees and Officer time	Ongoing on a five year rotation	Recommended in biodiversity action plan.

Action	Lead officer	Key partners and consultees	Estimated resource required and source of funding	Target Completion date	Comments
Stop mowing bank sides near playing fields, coppice/remove encroaching saplings to encourage scrub species such as Gorse and Hawthorn. Reduce mowing along the top of the bank adjacent to the sports pitches, using graded edge technique to maximise variety in vegetation length and flowering time.	Martin Willcox	Andy Welch, FOMP	Future Jobs Fund Trainees and Officer time	Ongoing	We are also installing shaped logs to demarcate the area of new mowing regime to help the Tractor drivers. The logs are from Southampton and shaped as seats by the Council Tree Contractor.
Clear dense shade adjacent to old steps near Weston Lane end of bank to encourage ground flora and more wildlife friendly native species.	Martin Willcox	Andy Welch, FOMP	Future Jobs Fund Trainees and Officer time	Ongoing	Recommended in biodiversity action plan. These steps are no longer needed as the nearby path has been improved for access to this area.
Train friends groups to enable them to carry out habitat and wildlife surveys on specific areas with the park	Lin Hand	Ian Bailey, Hilary Bradley, FOMP, FOMN Groundwork Solent	£500	TBC	This offer is still open, but with reduction of involvement by friends group there is no fixed date to complete it by.
Repair the Clock Tower	Capita, Gary Hargreaves	Martin Willcox, Richard Cross	??	TBC	The wood in this area has been found to be more decayed than first expected Property Services are carrying out a feasibility study on how best to repair it.

Action	Lead officer	Key partners and consultees	Estimated resource required and source of funding	Target Completion date	Comments
<i>Community involvement</i>					
Continue to improve existing events with greater Friends input.	Hilary Bradley	FOMP, FOMN, Mayfield Nurseries, Bowling Club	Est £5K plus Officer time and voluntary time	Each year over the next three years	Ensure that existing events do not deteriorate, with friends input try to keep the events feeling fresh. Although budgets for events have been significantly reduced we are still committed to getting best value and quality into the events we do put on. Friends will be a key part of this in the future.
Work with Community Payback to provide projects and areas of work for offenders	Paul Cobbold	Martin Willcox, Community Payback	Officer time	Ongoing	Community Payback is a city wide scheme and specific projects within Mayfield park have been identified.
Explore Options for the future use of the redundant basket ball court area	Nick Yeats	FOMP, Martin Willcox, SCC Youth Service, Louise Fagan Active Communities, Groundwork Solent.	Unknown	Ongoing	The cost of maintenance for such a facility has hampered its progress. Also the capital funding that was originally available has now gone. The Friends groups are still keen to have some provision for teenagers in this area and SCC will be working closely with them to explore alternate ideas and funding sources.

Action	Lead officer	Key partners and consultees	Estimated resource required and source of funding	Target Completion date	Comments
<i>Marketing</i>					
Develop Mayfield Park information on City Web (including promotion of events) and link to stakeholder websites	Helen Seward	Hilary Bradley and NS web team	Officer time	Ongoing	Ongoing maintenance and updating of the website continues
Promote the park and its wildlife and heritage to local schools as an education resource.	Ian Bailey	FOMN, Bowling Club, Mayfield Nurseries Local Councillors Sholing Valleys	£1,000 plus Officer time	Ongoing	An element of this has been undertaken through the Making a Difference program. The education Officer at the Hawthorns will develop this offer with the help of Sholing Valleys Study Centre
Promote the activities of the Friends of Mayfield Park and encourage local residents and users of the park to report incidents	Louise Fagan	Friends of Mayfield Park, City Patrol	Officer time £1,200	Ongoing	Consultation with park users across the city has resulted in a Green Space Guide which will be published later this year. Mayfield Park users and friends will be encouraged to help spread the messages in this guide.
<i>Management</i>					
Continue to involve stakeholders in the development of the Management Plan	Nick Yeats	FOMP, FOMN, Mayfield Nurseries, Bowling Club	Officer time	Ongoing	This has improved in the last few years and will continue to be a priority for the development of this plan.

Action	Lead officer	Key partners and consultees	Estimated resource required and source of funding	Target Completion date	Comments
Clarify lines of enquiry for Friends/ stakeholders- who's who in Neighbourhood Services and who to report incidents to.	Nick Yeats	Martin Willcox	Officer time	April 2010	In the past three years the service has undergone several restructures and unfortunately key lines of enquiry have been blurred for a short period of time. New structures are now in place (Jan 2010) and reporting lines can be communicated to the relevant groups.
Update signage in the park to reflect current methods of customer enquiry	Cliff Brown	Nick Yeats, Hilary Bradley Mayfield Nurseries Bowling Club Local Councillors	Est £2,000 plus Officer time	Dec 2013	Ways of contacting the Council are changing to include texting, online reporting, web enquiries, golden numbers etc. The signage across the park needs to be updated to reflect these changes.
Assess the management of the park and provide defence against misuse of grass areas and footpaths by car drivers	Richard Cross	Nick Yeats, Cliff Brown	Est £2,000 plus Officer time	August 2013	

3.5 Friends of Mayfield Park Action Plan 2009/10

This action plan was developed by the Friends of Mayfield Park in consultation with the District Manager and other members of the Neighbourhood Services Division. The plan contains elements that the friends will undertake on their own, joint projects and items that the friends will support the Council with.

Projects for the Friends to lead on and do – 2010/11	
What	When
Elect new committee and chairperson to augment the group and take it forward into the future.	Winter/spring 2010
Litter picks and general tidy ups	Throughout Year
Clear Himalayan Balsam and general stream clearance	June 2009
Continue development of a circular path	To be agreed
Liaise with Junior Neighbourhood Wardens to involve them with any suitable tasks	Ongoing
Continue to monitor effectiveness of new speed limit signs and promote message of safe driving in the park	Ongoing

Projects for joint working with Friends and SCC	
What	When
Provide greater support from the Active Communities team to enable this group to reach its full potential.	Throughout the year
Enviro-crime campaign to encourage dog walkers to dispose of dog waste appropriately	Summer 2010
Seat maintenance at Bowling Green, cleaning and varnishing, working with bowling club members	Ongoing
Uncover and reinvigorate hidden paths through woodland	Winter 2010/11
Work on a master plan for paths through the park, their linkages and legibility	Ongoing
Continue with rhododendron clearance to open up views.	Ongoing
Training with Friends groups on wildlife and biodiversity identification to carry out surveys across the park	Throughout the year

Projects for joint working with Friends and SCC	
What	When
Informal training in the use of tools and equipment by Hawthorns staff when appropriate	Ongoing
Continue to look at funding sources for parks improvements	Ongoing











Projects led by SCC with opportunities for involvement of Friends group	
What	When
Hilary from Hawthorns to arrange woodland walks e.g. Bug Hunt, Fungi Foray	Ongoing (Autumn and Summer)
Look at and implement alternative routes for greenway path adjacent to sewage pipe.	Winter 2010/11

Appendix 1: Map showing maintenance regimes by area in Mayfield Park

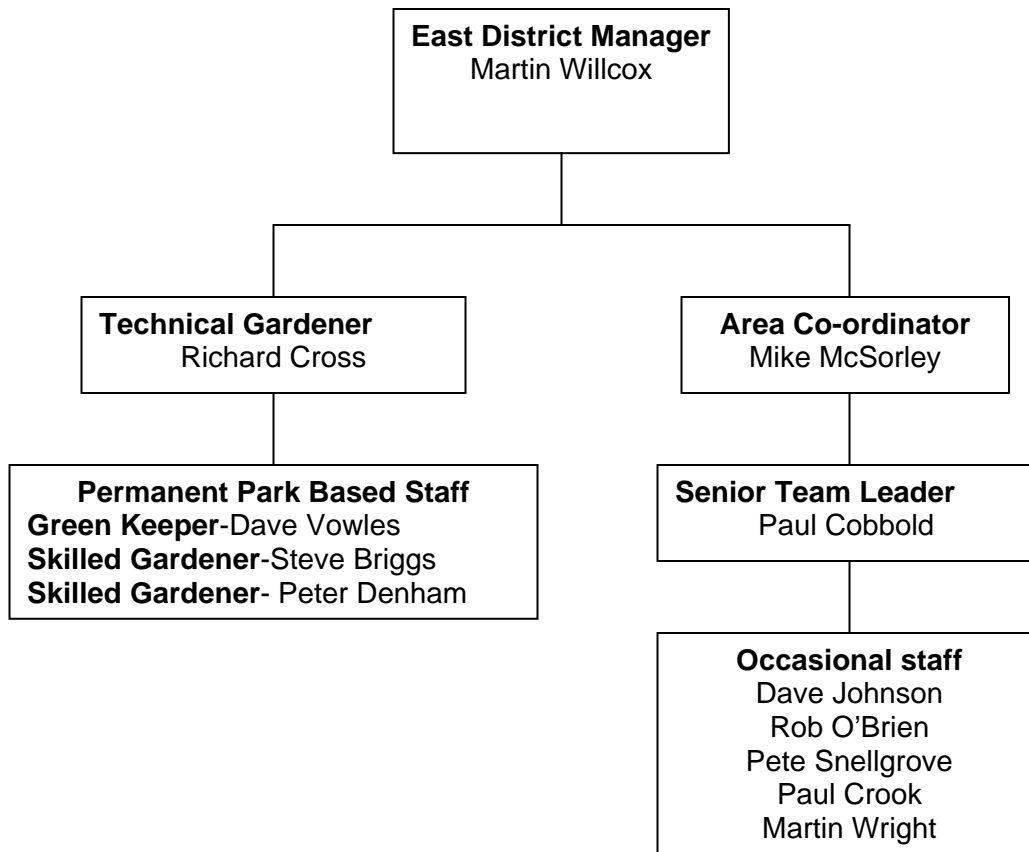


© Crown copyright. All rights reserved. Southampton City Council 100019679 2007

Map Legend

	Bowling Green – box mow 3 times per year
	Flower Beds – seasonal weekly visit
	Grass Plot – rotary cut flat fortnightly
	Grass Plot – rotary cut slope fortnightly
	Grass Plot – cylinder cut weekly gang mow
	Grass Plot – flail 3 times per year
	Grass Plot – cylinder cut weekly
	Grass Plot – cut and collect twice per year
	Hedges – cut once per year
	Play Area – daily recorded maintenance
	Perennial Borders – weekly visit
	Rose Beds – fortnightly visit
	Shrub Beds (designated) fortnightly visit
	Shrub Beds (general) monthly visit
	Shrub Beds ground cover monthly visit
	Shrub Beds Erica Bed monthly visit
	Paths – sweeping as monthly or as required
	Woodland – visits as required

Appendix 2: Structure as of January 2010 for Mayfield Park



Appendix 3 Updates for Mayfield Park for 2011/12

Exciting times for Mayfield Park

- In 2011 the decision was finally made to sell the Park Lodge and the new owners are presently carrying out improvement works before they move in.
- We have been trialling different bedding plants in our seasonal bedding schemes as in recent years we have had a problem with deer eating the geraniums etc.

Improvements to the Park

- Goal posts have been erected to one side of the football pitches and away from the main road so as to cater for children who wish to have a kick about out of the football season.
- Three speed ramps have been installed along the main entrance road leading to the bowling green car park so as to reduce the speed of drivers using the park and hopefully preventing any potential accidents.
- The roadway to the nursery has been resurfaced as it was beginning to become very uneven due to the amount of traffic using it.

Community Involvement

- The Bowling club have continued to promote the park and have provided free starter sessions to the public.

Park events for 2012

- Spring into Action
- Natures Harvest autumn event
- Community fairs
- Mayfield Nursery open days

1.6 Resources Update

1.6.1 Staff

The day to day management and maintenance is undertaken principally by the Mayfield Team within the Parks and Street Cleansing section. The Technical Gardener Richard Cross has overall responsibility of the park. Richard reports to Martin Willcox, the East District Manager. There are now two part time and two full time staff who are all principally employed within the park.

Mayfield continues to be a training centre for NVQ candidates to learn practical skills such as bedding and bowling green maintenance.

1.6.2 Finance and Budget

Budget allocations for the general maintenance have continued broadly in line with those of 2009/10.

Due to the overall financial position of the city council, the service is now tasked with reducing overall spend during 2012/13. This means we will be looking at all our tasks to see if there is a cheaper way to achieve them.

1.7 Community Involvement Update

The local schools continue to contact us so as to place their pupils on work placement programmes working alongside our skilled staff to gain knowledge.

The Bowling club help by maintaining the park furniture by giving them a lick of paint/preservative when required as well as undertaking the decorating of the pavilion.

1.8 User Feedback Update

The results of the latest City Survey conducted in 2010 shows public satisfaction with the city's parks and green spaces to now stand at 91%.

2.3 Specific Objectives for 2012/13

The following key objectives have been derived from the Green Space Strategy, the relevant team business plans and customer feedback and provide a focus for management in 2012/13. Specific actions to address these objectives are identified in the action plan.

- Continue the removal of invasive Laurels and Rhododendron from the woodland bank
- Stop mowing where possible to increase area's of wildlife importance.
- Work with local PCSO's to tackle the problem of horse and cart riding around the sports fields.
- Explore solutions in making good nursery wall.
- Work with the local PCSO's and Park Lodge owners to improve security of the park.

2.5 Green Spaces Policies Relating to Mayfield Park Update

2.5.2 Health and Safety

Three speed ramps were installed along the main drive leading up to the bowling green following complaints from park users of speeding vehicles.

2.5.4 Sustainability

The green waste generated in the park is being chipped and composted and then returned to the park so as to suppress weeds and retain moisture.

Large trunks of trees that are felled are being used to defend areas as well as being used for seating in areas that usually suffer from criminal damage.

3.1 Measuring success and progress towards Green Flag criteria

We recognise our success from the completion of the points from the action plan as listed below.

Welcoming place

- Updating of notice boards takes place on a regular basis

Healthy, safe and secure

- We have established links with the local PCSO's
- The cutting back of vegetation and opening up of sight lines took place in 2010.

Clean and well maintained

- The fencing along Weston Lane has now been renewed.

Sustainability

- The Ground Work Future Funding team have worked with the park staff to cut back etc. along the carriageway.

Conservation and heritage

- We are presently in discussions with the nursery concerning the future of the wall.

3.2 Programme of events

Events within the park this year included:

Spring into Action on 9 April
Orienteering Open Event on 7 July
Natures Harvest on 1 October

All events were publicised through the councils 'what's on' web pages. Events were also listed in City View, the council's flagship magazine that is distributed to all households. The Neighbourhood Services Team also produced a park events leaflet which included [park name] events.

Appendix 4 Appendix Updates for Mayfield Park for 2012/13

Headlines

Exciting times for Mayfield Park

Working in partnership with Groundwork Solent and Active Nation, we have been delivering a program of volunteering along the greenway which makes up part of Mayfield Park. This has meant that the footpath to the north west of the park along the old carriage drive has been resurfaced. The Access to Nature Funding has been augmented with developer contributions and has enabled volunteers to gain useful skills to get them back to work whilst being closer to nature in the city.

Improvements to the Park

As part of a city wide initiative to get people to recognise our parks Mayfield has now had 2 Park identity markers installed. The idea of these is to let people driving past know there is a park there and what its name is.

Community Involvement

The long running issue of the stability of the Nursery wall has now been sorted out. Mayfield Nurseries a subsidiary of Solent Mind, were awarded a £125,000 grant from the Social Enterprise Initiative fund to repair the wall, replace the existing boiler, construct two new polytunnels and for a log cabin to promote the nursery.

They were also awarded £10,000 from the Big Lottery Fund to offer gardening on prescription to people with mild to moderate mental health problems.

The Bowls Club continues to attract people to their public sessions and have been out and about sanding and teak oiling the benches to keep them in good condition.

Park events for 2012

The annual Spring into Action event was held on 28 April 2012 and attracted hundreds of park users to an number of activities and stalls.

The Natures Harvest event was held on 6 October 2012 and was, again, very successful getting many local residents involved in their local park.

Mayfield Nurseries held 3 community events attracting hundreds of people into the nursery and park from the local community.

1.5 Service Standards Update

1.5.1 Service Promises

The City Services Division of Southampton City Council is responsible for managing, maintaining and developing Mayfield Park. The Park, in common with all of Southampton's parks and green spaces, is managed and maintained in line with a set of 'Service Promises' that define baseline standards of service that customers can expect to see delivered consistently across the city.

To meet budget savings proposals the Council is looking to provide its service with less posts and in a slightly different structure. This will mean that there will be one Team maintaining the east of the city. It is hoped that wherever possible existing service promises will be maintained, however, we are anticipating that where we currently have promises around maintaining grass between 75mm and 100mm that these may creep up to 100mm to 125mm.

We will be reviewing our service promises in light of the budget savings over the next year.

1.6 Resources Update

1.6.1 Staff

From April the day to day management and maintenance of Mayfield Park will be undertaken by the new East Team. Martin Willcox the East District Manager has responsibility for Mayfield Park. There will be three part time staff who also work at Riverside and Veracity Parks and one full time member of staff principally employed within the Park. This team will be lead by Richard Cross and he and Martin are supported on maintenance and management issues by John Horton the Parks and Street Cleansing Manager and with policy and strategic improvement issues by Nick Yeats the Trees, Allotments and Parks Improvement Manager.

Working in partnership with Nordic Pioneer the East Team trained and supported 12 grounds cleansing trainees. These were principally on a 6 month cleansing apprenticeship but worked across the parks and cleansing teams gaining skills in horticulture as well as cleansing. Of the 12 who started 7 completed their training. We are hoping that some of these will return as summer seasonal staff.

1.6.3 Finance and Budget

At the time of writing the full impact of savings has not been established, however, it is likely to be in the order of a reduction of 15% to 20% from the budgets shown in the management plan.

There is currently no developer contributions for Mayfield Park, however, regeneration of the housing and shops at Weston Parade will generate capital in the future. This will be put towards the actions identified in this management plan for park improvements.

1.7 Community Involvement Update

Unfortunately this year has seen a significant reduction in the involvement of the Friends of Mayfield in the park. With the resignation of the Chair and the one of the other committee members due to other work commitments, they have struggled to keep a committee going. We are still in communication with them and hope to rejuvenate the group later in the year through a small event.

The Friends of Mayfield Nurseries and the Bowling club continue to attract new members and people to the park through their events and open days.

2.4 Management Structures Update

Through a number of organisational restructures the City Services division has now been created including Parks, Street Cleansing, Waste, Transport, Trees, Allotments and the Natural Environment. This will give opportunities for new ways of working in the future particularly around waste removal and recycling.

2.5 Green Spaces Policies Relating to Mayfield Park Update

2.5.2 Health and Safety

With the sale of the Lodge and the increase in popularity of the Nursery an issue has arisen with parking along the access road into the park. This is also regularly used by parents dropping off and picking up the kids from the school across the road. The issue is one of damage to grass areas and potential for injury to park users having to dodge between cars. We are working with the Nursery, Lodge owners and School to resolve this issue.

One step we have already taken is to mark up all the spaces in the bowling club car park to make it clear where people should park and reduce those taking up more than one space. Further options could include excluding all parking from the main drive, locking the park gates at peak hours, ensuring people only park in the car parks provided, increasing the parking area for the nursery, reinstating the car park in the nursery. These options are by no means exclusive and need to be consulted on over the summer before a solution is found.

2.5.3 Enviro-crime and cleanliness

We are also looking at reducing the opportunities for people to drive off of the driveway onto the grass and to prevent people being able to joy ride onto the paths through the Azalea beds. Both of these need to be done sympathetically to the landscape and we are looking at our best choices between, dragons teeth, planting, bollards or land form bunding.

2.5.4 Sustainability

With the sale of the Lodge it was discovered that the Parks department were paying for all water entering the site. This included the Lodge and the Nursery. We are now working with Property Services to get a new meter installed into the Lodge and we have started to use an existing meter in the Nursery, with Mayfield Nurseries getting their first water bill in March. Hopefully this will highlight to everyone their water consumption and help to reduce overall water use.

2.5.5 Conservation and heritage

Unfortunately during repair works to the clock tower it has been discovered that the rot in the wood is much more extensive than was first thought. Capita, Property Services are now working on a plan to restore this listed building to a state of good repair.

2.5.5 Marketing

We have been working with Mayfield Nurseries and the Bowling Club on a way in which we can de-clutter the entrance. Currently the entrance is mainly full of signage for the Nursery and the Park is beginning to lose its identity. We have therefore been working with the stakeholders to come up with a single sign that would capture all the information visitors might need, whilst reducing the need for banners and other temporary signage.



Welcome to Mayfield Park



Home of Mayfield Nursery and Mayfield Bowling Club - Both open to the public.

<p>Mayfield Park</p> <p>Mayfield Park is the former grounds of Mayfield House. The Park is part of an important green corridor in the east of Southampton linked by Greenways starting at Bursledon Road and ending up at Weston Shore.</p> <p>The Park is a large 17 ha area of formal and informal parkland with woodland walks and Grade II listed buildings. Facilities include football pitches, a basketball court, play area & bowling green</p>	<p>Mayfield Nursery and Cafe</p> <p>Built in an old walled garden of Mayfield House, Mayfield Nurseries is both a mental health project and garden centre, and is part of Solent Mind.</p> <p>Our opening times are 8.30 to 4.30 Monday to Friday and 10am to 4pm Saturday and Sunday April to June</p>	<p>Mayfield Bowling Club</p> <p>Mayfield Bowling is open to the public and run by the Bowling Club. The Club runs free training sessions for all new comers to the sport.</p> <p>Opening times are: Monday - Friday 10:30 - 19:00 (or Dusk) Saturday/Sunday 10:30 - 16:30</p>	
--	--	--	--

www.southampton.gov.uk/parks

2.5.6 Trees

The Very high risk trees were last surveyed in 2011 and are due to be resurveyed with all the others in late summer 2013 as part of STORMS.

3.1 Measuring success and progress towards Green Flag criteria

We recognise our success from the completion of the points from the action plan as listed below.

Welcoming place

- In partnership with Groundwork Solent and Active Nation we were successful in securing over £250k of funding to provide a range of improvements to the Greenway which runs through Mayfield Park and provide volunteers training and skills to help them gain employment in the future.

Healthy, safe and secure

- Greater links with the PCSO's has been established with the Area Manager in regular contact to discuss issues as they arise.

Clean and well maintained

- The fencing along Weston Lane has been renewed and repaired where appropriate.

Sustainability

- Tree seeds collected from Mayfield Park were grown on by the nursery and planted as part of the 2011 Trees for Life planting in the local Chamberlayne Park school. Tree for Life is a scheme by which we plant trees to commemorate the birth of all the children in Southampton for that year. It is now in its 13th year in its current form, but plantings date back to 1996.

Conservation and heritage

- The nursery wall has been repaired and is back in use by the Nursery.
- Drainage ditches and ponds have been established along the carriage drive, with willows being coppiced to establish glades
- The mowing regime on the bank adjacent to the Obelisk has been changed to encourage biodiversity, with logs installed to double as seats and to demarcate the area of mowing.

Community Involvement

- Despite restricted budgets events are proposed for the coming year

Marketing

- Ongoing improvements to the Council web site have been undertaken, trying to make it easier to get information about the park.

Management

- Stakeholders are encouraged to be involved in the management plan.
- We have kept people informed of the correct lines of enquiry and once the current restructure is over we will reinforce this to ensure people know who it is best to contact.
- We are currently working with the Stakeholders to update the signage in the park

3.2 Programme of events

Part of the 2013/14 budget proposals is to reduce the funding for events. In the future they will need to be more self financing, where in the past they have always been free. To this end we will be reducing the number of events the Parks department fund at Mayfield down to one in the Autumn.

We have been working closely with Groundwork Solent and as part of the Making a Difference project we will be able to also have a spring event this year. Part of this will also be used to try to rejuvenate the friends group.

All events are publicised through the councils 'what's on' web pages.

3.4 Action Plan Updates

See Action Plan in Management Plan

3.5 Friends of Mayfield Actions for 2013/14

With the current low involvement of the group there has been no actions drawn up, however, should the group be rejuvenated then it will be one of their first actions.

Green Flag Feedback

If you would like to make any comments about this park or green space or would like to make specific suggestions and recommendations for the management plan, please complete this form.

Name of park: _____

Comments:

If you would like to be involved in the development of this management plan and the park please provide your contact details.

Your name: _____

Your contact details:





Please return this form to Helen Seward, Neighbourhood Services, Town Depot, Albert Road North, Southampton SO14 5AT or email your comments to parks@southampton.gov.uk.

