



# Deepdene Management Plan 2010-15

---

**Produced by**

**City Services Division**

**&**

**Key Park Stakeholders**

**November 2011**

**updated 26 November 2012**

## Contents

Chapter 1 - Introduction .....	3
1.1 Description of Deepdene .....	3
1.2 Brief History .....	6
1.3 Policy Context.....	7
1.4 Service Standards .....	10
1.5 Resources .....	11
1.6 Community Involvement .....	11
1.7 User Feedback .....	12
Chapter 2 - Management Strategy.....	13
2.1 Vision.....	13
2.2 Aims.....	13
2.3 Specific Objectives for 2010-15.....	13
2.4 Management Structures .....	14
2.5 Green Space Policies Relating to Deepdene.....	15
Chapter 3 - Actions and Recommendations .....	20
3.1 Progress since last action plan .....	20
3.2 Programme of events for 2011 .....	20
3.3 Maintenance schedule.....	20
3.4 Action plan for 2010-15.....	21

Appendix 1 - User survey (October 2011)

Appendix 2 - Barrier gate design (October 2012)

## **Chapter 1 - Introduction**

This management plan has been produced in consultation with key stakeholder groups to provide a framework to guide the development of Deepdene to ensure that it continues to improve with respect to its historic layout and fulfils its role in meeting the social and recreational requirements of both residents and visitors.

The management plan sets out the general principles that should be applied over the next five years and includes an annual action plan for specific developments and improvements.

The management plan is a 'live' document in that the development of the park is guided by the plan but not limited by it. Staff working in the park and the various key stakeholders have assisted in writing the document and have copies to refer to during the year.

The first chapter gives an overall introduction to Deepdene including the history, features and characteristics. This is followed by the management strategy, detailing aims and objectives. The third chapter contains recommendations and actions to be applied to the park in the short and longer term.

The future running of Deepdene will be based upon the Management Plan, City Council Policy, and Legal Requirements as well as being based upon the views and requirements of residents, voluntary groups and local interest groups.

### **1.1 Description of Deepdene**

Deepdene Recreation ground is an informal public park, consists mainly of mixed conifer/deciduous woodland with an open meadow area towards the north eastern boundary. The site slopes from the eastern side down to the west and is bordered by Cobden Avenue to the south which is one of the main routes into Southampton. To the east of the site is Midanbury Lane, a quieter suburban road.

The surrounding area is mainly domestic housing consisting of family sized houses and blocks of apartments.

The site has an interesting mix of tree species and there is a lot of potential to improve the biodiversity of the site by clearing some of the more invasive species such as Japanese Knot weed, Sycamore and Rhododendron.

For the purpose of the management plan there are three distinct different areas in the site with various habitats within them. These are indicated on the following map.



This map is based upon Ordnance Survey material with the permission of Ordnance Survey on behalf of the Controller of Her Majesty's Stationary Office © Crown copyright. Unauthorised reproduction infringes Crown copyright and may lead to prosecution or civil proceedings. Southampton City Council 100019679 2010

Map showing three distinct areas of Deepdene

The 3 areas comprise of:-

### 1.1.1 Area A

Parkland woodland: The south west corner of the site has a more open feel. The dominant species is Monterey Pine and grass. There is more light in this area however lower canopy species are beginning to encroach into this area including Sycamore, Holly and Elder.



### 1.1.2 Area B

Meadow: Open area of amenity grass. This has potential to support wild flower species and a flora survey should be carried out in the appropriate time of year to assess the current biodiversity. Along the western boundary of the meadow backing onto properties in Lacon Close are a row of pollarded Lime trees.

### 1.1.3 Area C

Woodland: The majority of the site is covered in closed canopy woodland with sub-canopy shrub cover. Consisting of mature mixed deciduous and conifer trees with an under storey of Holly and Sycamore saplings. During the time I surveyed, July 2009 the site there were no species present that would indicate that this area was semi-ancient natural woodland however indicative species such as blue bells are not present at this time of year, a flora survey carried out in spring may give more information on the status of the woodland. The number of exotic species and the presence of youngish sycamore regeneration would make this area more likely to be remnant parkland that was formally planted at the beginning of the 20<sup>th</sup> Century. There are several niche habitats within this area including several standing dead trees, most notably and large dead oak to the east which would provide an important habitat for invertebrates, fungi, lichen and mammals such as bats. There is also an old formal shaped pond which is currently heavily shaded and full of decomposing leaves clearing of the pond and pruning back of the tree canopy shading would improve the biodiversity of it.



## 1.2 Brief History

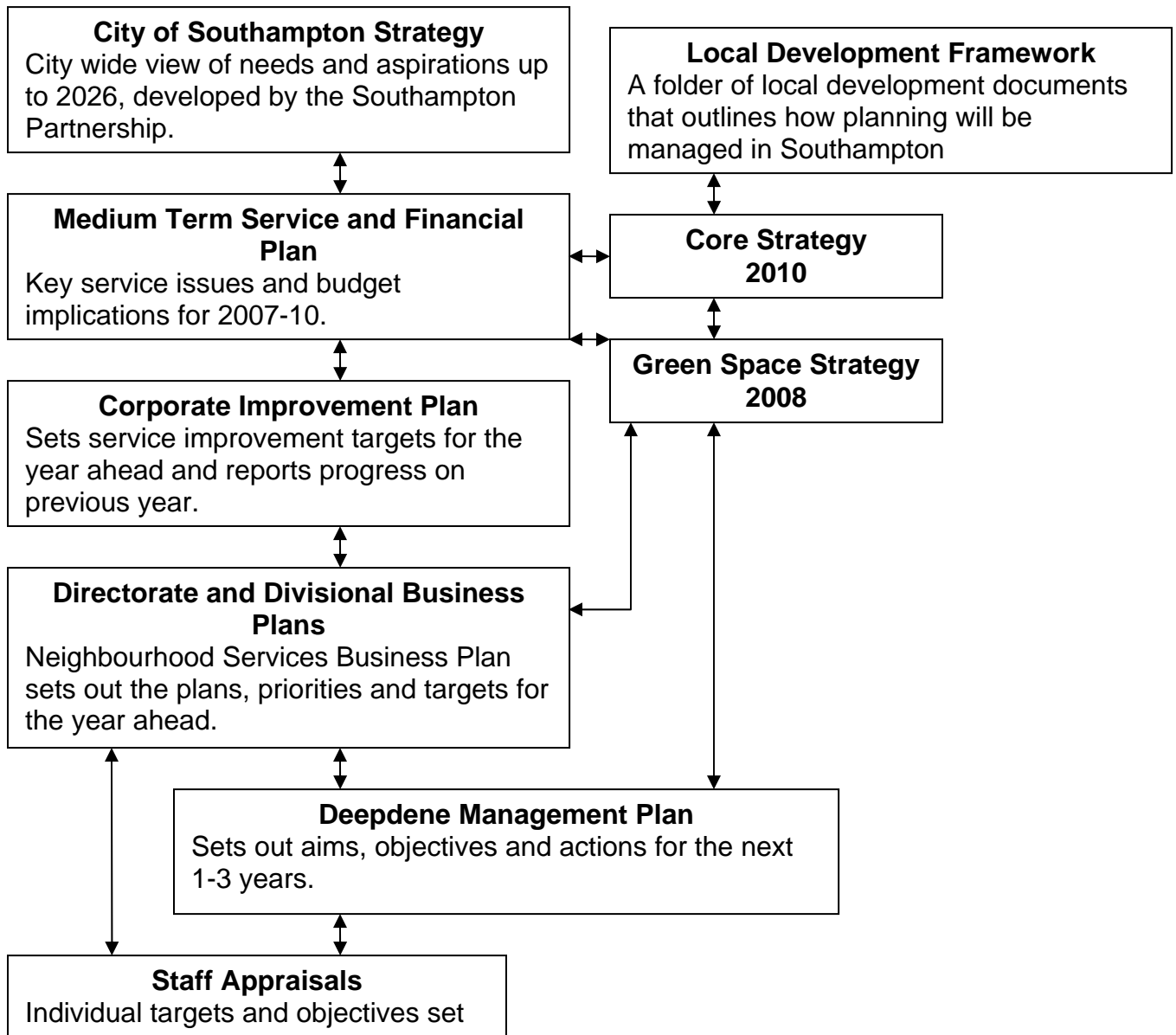


The woodland has been managed for the last 10 years on a reactive basis, when complaints have been received. Works are currently carried out on an adhoc basis such as clearing fallen trees and crown lifting over the bordering roads. .

There is a line of Lime trees adjacent to Lacon Close that have had been more regularly pollarded. These trees were pollarded in 2002 and 2006. And a patch of Japanese Knot weed in the north western corner is treated on an annual basis. The grass area is cut 2 times a year.



### 1.3 Policy Context



The diagram above shows the golden thread of plans and strategies for Southampton City Council and shows how the Deepdene management plan fits into this. Southampton's Green Space Strategy was adopted in October 2008 and can be viewed at <http://www.southampton.gov.uk/gss>.

Southampton City Council has recently amended its priorities and six new key priorities have been identified. Deepdene supports these priorities in the following ways;

1. *Providing good value, high quality services*  
Deepdene is freely available to all and areas of the park are fully accessible. We work closely with the various “Friends” and user groups to ensure a coherent management of the park for the local community.
2. *Getting the City working*  
Deepdene contributes to the overall green infrastructure of the city making Southampton a more pleasant place to live and therefore encouraging both businesses and their work forces to want to locate in Southampton.
3. *Investing in education and training*  
The Park provides a learning resource for the residents of Southampton, local schools should be encouraged to use this resource. Interpretation of the site can provide information and educational material for residents groups and schools.
4. *Keeping people safe*  
Existing partnerships and close working with the local community, PCSOs and City Patrol helps to combat anti-social behaviour and build community cohesion. Annual events could give the local community a greater sense of ownership of the park and attract more people in, thus helping to reduce anti-social behaviour.
5. *Keeping the city clean and green*  
Deepdene offers a green resource within the city improving its ability to adapt to climate change. Green waste within the park is recycled and this contributes to achieving this priority.
6. *Looking after people*  
Deepdene is a key green space for a large area of housing, therefore it has a vital role in improving those residents’ health and wellbeing.



There are a number of other city wide strategies and plans that directly or indirectly affect the management of the parks. The table below lists these with key areas of relevance to the management of Deepdene.

<b>Council Strategy/ Plan</b>	<b>Key theme for management of Deepdene</b>
Southampton's Green Space Strategy (GSS)	The Green Space Strategy was adopted by Cabinet in October 2008. The strategy provides a classification of parks based on quality and standards. All park management plans link to the GSS. Key priorities include: <ul style="list-style-type: none"> <li>• Increasing community involvement in the management and maintenance of green spaces</li> <li>• Encouraging more events and activities in parks</li> <li>• Increasing the number of Green Flag Awards across the city and using the criteria set out to inform future management plans.</li> </ul>
Core Strategy	Has specific planning policy on enhancing and increasing green space provision in Southampton. As well as policies on climate change adaptation and green infrastructure improvement. The GSS acts as an evidence base for this document.
Biodiversity Action Plan	Protect, promote and improve biodiversity across the city, especially in relation to the woodland areas of Deepdene.
Street Scene Strategy	To improve the quality of streets, parks and open spaces across the city making Southampton 'smarter, safer, cleaner'
CAA (Comprehensive Area Assessment)	The CAA concluded that overall SCC performs well. Quality green spaces are included in the overall assessment of the area.
Play Policy	Making play provision welcoming and accessible.
Neighbourhood Services Management Plan	A key overarching priority of the business plan is to make Southampton a greener city, specific commitments include; <ul style="list-style-type: none"> <li>• Delivering the GSS action plan by identifying and prioritising further park improvements</li> <li>• Developing a green park code to include dog control orders.</li> <li>• Improving sustainability and climate change adaptations.</li> </ul>

## **1.4 Service Standards**

### **1.4.1 Service Promises**

The Neighbourhood Services Division of Southampton City Council is responsible for managing, maintaining and developing Deepdene. The Park, in common with all of Southampton's parks and green spaces, is managed and maintained in line with a set of 'Service Promises' that define baseline standards of service that customers can expect to see delivered consistently across the city. The 'Service Promises' were developed in consultation with community groups and key stakeholders and are written in clear and non-technical language to enable all customers to easily recognise the standards of service they can expect to see delivered within their neighbourhood. The Green Spaces Service Promises are published on the Parks and Green Spaces page of the city council's website ([www.southampton.gov.uk/parks](http://www.southampton.gov.uk/parks)). Compliance is monitored through ongoing monthly on-site inspections, with a target of >95% of sites visited maintained in line with the service's published standards. Performance results form part of the Divisional performance scorecard and are reported in the Neighbourhood Services Business Plan. Service Promises are included within staff's individual and team appraisal targets, with local performance reported and reviewed at regular team meetings.

### **1.4.2 Quality Audit**

Park development needs and priorities are informed by user consultation and standards set out in Southampton's Green Space Strategy. This promotes audits to be undertaken to assess their current status and to give a baseline for future improvement and required investment. A quality audit of all of Southampton's Parks was undertaken by an independent consultant in Autumn 2009. The data collected was based on green flag criteria (a pass is 66%) and gives a good idea of the areas where quality needs to be improved. The Audit also gives an idea of numbers and quality of seating and bins. Deepdene scored 40% in the audit giving a good indication that this park is in need of improvements to bring it up to reasonable standard.

## **1.5 Resources**

### **1.5.1 Staff**

The day to day management and maintenance is undertaken principally by the East Team within the Parks and Street Cleansing section of the Neighbourhood Services Division. Martin Willcox has recently become the East District Manager with responsibility for Deepdene. He is supported by the Area Coordinator Mike McSorley.

Although there are no on-site staff the park is attended daily by parks and cleansing staff to carry out inspections and reactive maintenance. Maintenance works in the park include grass cutting, general cleansing and litter bin emptying and play ground inspection. In addition support on ecology and natural environment work is given by Andy Welch from the Hawthorns Urban Wildlife Centre.

Martin and the area team are supported by John Horton, (Parks and Cleansing Manager) and Adrian Crook (Project Officer). Nick Yeats (Trees, Allotments and Parks Improvements Manager) also assists with policy and strategic development of the Park. Jon Dyer-Slade is the overall Head of Neighbourhood Services.

### **1.5.2 Finance and Budget**

Parks and Cleansing are under increasing pressure to reduce budgets and this is likely to result in reduced maintenance of certain areas. However, there is an opportunity through Developer contributions to provide some capital spend within the park which could help to reduce the maintenance costs overall.

There is currently £12,000 of developer contributions available for improvements to this park. It is envisaged that with the input of the local residents this could either be used directly for improvements or be part of match funding for any funding bids they make.

Any improvements made, should not impact on the current maintenance levels and should wherever possible look to reduce maintenance.

## **1.6 Community Involvement**

Although there is currently no official “friends of” group, the Bitterne Park Residents group are very keen to see that improvements occur in the park. There is also a Friends of Riverside Park group based in the nearby park.

There is therefore potential for these two groups to help to support the maintenance teams through reporting faults, litter picking and other physical maintenance tasks throughout the year. There is also the potential for such groups to be the eyes and ears on the ground and provide very useful feedback on any improvements to the park. Wildlife studies could also be instigated with volunteers undertaking the survey work to provide data on ancient woodland indicator species and other wildlife using this area.

There are also many funding opportunities open to local groups which need to be applied for by the groups. The Council will support these applications as much as possible and may be able to provide match funding in certain cases.

### **1.7 User Feedback**

The Bitterne Park Residents Association contacted the Council to let them know how loved the park was and that they consider it to be in need of some improvement. No official user feedback has as yet been undertaken.



Local residents have expressed concerns regarding anti-social behaviour in the site. Although there is some signs of vandalism, such as a broken bench (now repaired) and graffiti on benches this does not appear to be widespread problem in this particular site.

There is a facility for users to leave feedback at <http://www.greenstat.org.uk/> but to date this has not been used. Greater promotion of this web site will be made in the future.

No figures are available to state the number of visitors to the park, the area appears to be mainly used by dog walkers living within walking distance to the park. A survey of visitors would be very beneficial to understand who currently uses this area. Such a survey could be carried out by the community groups and would help in establishing priorities for improvements to the area.

## Chapter 2 - Management Strategy

### 2.1 Vision

A vision for this park is yet to be agreed. A potential vision could be:

**For Deepdene to be a good quality local green space offering woodland and open meadow for local residents to rest, play and get active in, whilst providing a good habitat for wildlife.**

### 2.2 Aims

Deepdene has a distinctive local character serving a range of functions for local people. The recognition and enhancement of this character is as essential to the development of the park as the maintenance of the individual components that make up the Park. There are four broad aims for the management of Deepdene identified in accordance with the City of Southampton Strategy, the Green Spaces Strategy and other key city plans;

- Retain and enhance the distinctive quality of the Park
- Provide a service that meets and continues to meet user need, both locally and strategically through the objectives of the City Council
- Interpret and promote the park to ensure the benefits it offers are maximised
- Ensure the park is accessible to all elements of the community.

### 2.3 Specific Objectives for 2010-15

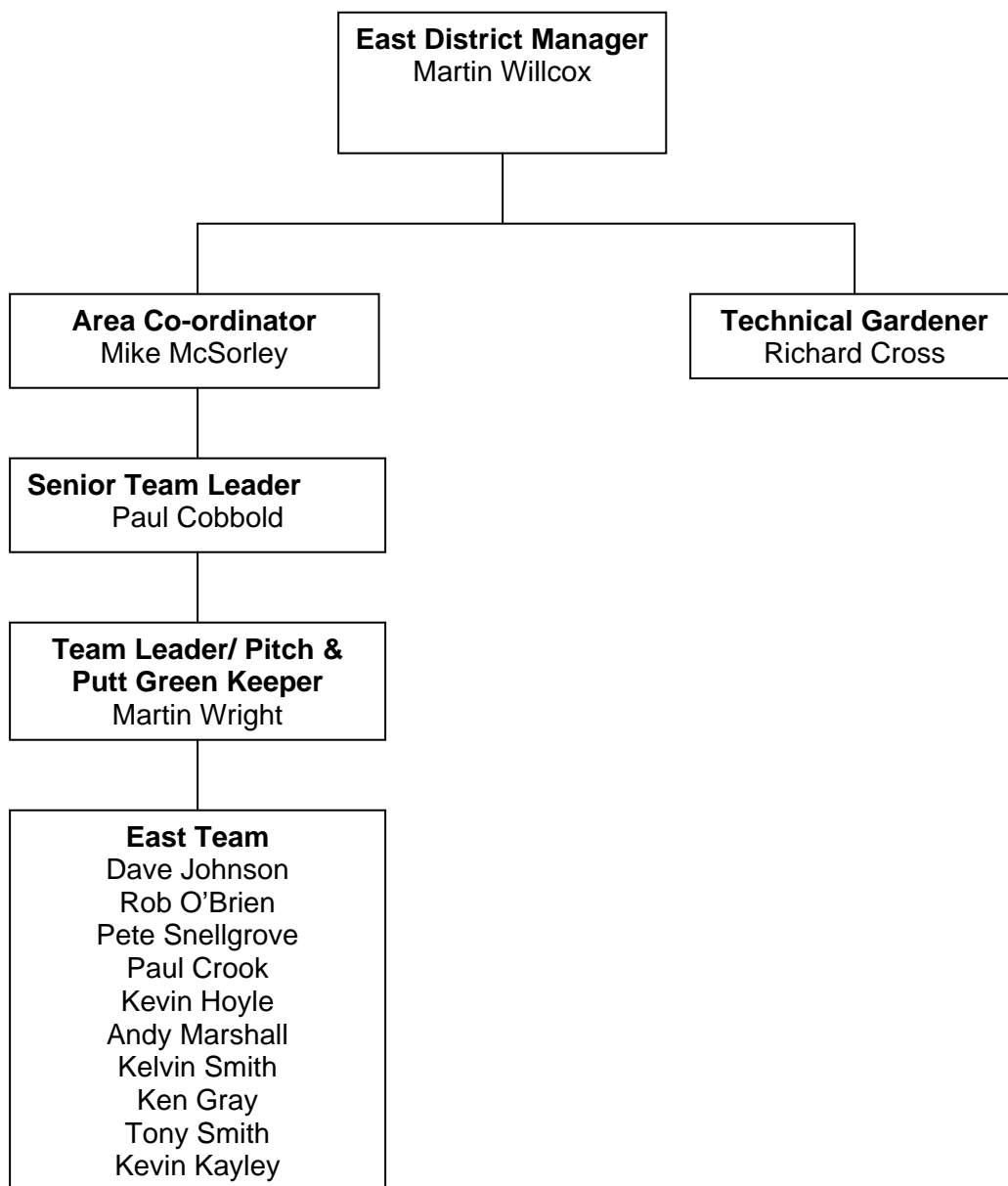
The following key objectives have been derived from the Open Spaces business plan, the Green Space Strategy, the Biodiversity Action Plan and customer feedback and provide a focus for management in 2010-15. Specific actions to address these objectives are identified in the action plan in section 3.4.

- *To maintain a balance between formal parkland, woodland and bio diverse areas, enhancing the characteristics of the Park.*
- *To increase customer satisfaction in Deepdene and to increase the numbers of people using this park in a positive manor.*
- *Continue to work closely with the residents groups in the area and to further increase community involvement.*



## 2.4 Management Structures

The management and maintenance of Deepdene is the responsibility of the East area team within Parks and Cleansing Department. The Parks and Cleansing Department is within the Neighbourhood Services Division of the Neighbourhood Directorate. The division also includes the Communities Team, Safer Communities Team, Major Projects Team and Trees, Allotments and Park Improvements Team. The following diagram shows a structure chart of the teams directly involved with the management of the park:



Managers within Neighbourhood Services undertake MBWA (management by walking about) which includes visits to Deepdene. The District Manager is the main link between staff on the ground and senior management. Quarterly meetings are held with Neighbourhood Services management and the District Manager to monitor progress on the overall maintenance of the East District.

The strategic management of the play area within Deepdene is lead by Play Services, through the Play Area Steering group, which is in the Children's Services Directorate. However, the play areas are built, managed and maintained by the Landscape and Schools Grounds Maintenance team (within Neighbourhood Services), who have recently incorporated the Play Ranger service. The health and safety inspections are carried out by the area team.

## **2.5 Green Space Policies Relating to Deepdene**

There are a number of operational and management policies covering open spaces and the whole city that have particular relevance to the park as detailed below.

### **2.5.1 Health and Safety**

All activities undertaken by the City Council in Deepdene are subject to risk assessment. The Neighbourhood Services Division has over 300 risk assessments in place covering the range of the teams work. Generic Risk Assessments are in the process of being put on the SCC intranet pages and are also held in the staff room at the stable block, in Mayfield Park as hard copies. Any potential Friends of Deepdene or other volunteer groups can be trained to carry out risk assessments before undertaking any work.

The play areas are inspected on a daily basis to ensure that equipment is safe and that the immediate area is suitably clean. Any faults are immediately reported to the city play area maintenance team. Neighbourhood Services Division are currently undertaking an appraisal of "mobile working" procedures, with a view to improve our working practices and make them more efficient. We are currently looking at software and hand held hardware that will enable us to carry out play area inspections and record the results without having to return to the office. It is anticipated that this project should be complete during 2010/11.

Damage or maintenance issues regarding bins, seats and signs are reported during the weekly check of the park by the on site staff. Any health and safety issues are dealt with immediately and other repairs are undertaken by staff as needed.

### **2.5.2 Enviro-crime and cleanliness**

The Council has a proactive approach to the removal of graffiti and fly posters on land it manages. There are two reactive teams ready to respond to graffiti problems, prioritising offensive material. Additionally protective coatings are applied to features regularly targeted facilitating rapid removal, and training and equipment is issued to key partners to enable them to tackle small incidents. Any offensive material is removed within 24 hours of being reported.

Litter bins are emptied three times a week or more often as inspections dictate.

A team of City Patrol Officers cover the whole of Southampton patrolling the streets, parks and open spaces seven days a week. During the day they deal with enviro-crime and issue fixed penalty fines for dog fouling, flytipping, graffiti and littering. This helps to reduce the negative impact of litter and dog fouling in particular. In the evening the role of City Patrol officers is geared towards dealing with anti-social behaviour, which can involve them patrolling parks and green spaces. Any occasions of vandalism are reported to the District Manager and repairs are carried out as soon as possible.

### **2.5.3 Sustainability**

The Parks and Cleansing team recycles all green waste produced and this applies to the green waste generated by Deepdene. Green waste from the park and surrounding areas is collected and shredded for use as mulch where possible in nearby parks (such as Riverside). This mulch is used to suppress weeds, condition the topsoil, and retain moisture and nutrients.

This approach reflects the parks team's general policy in terms of waste disposal, which is to ensure waste is collected, processed and disposed of in as sustainable a way as possible, with minimum carbon emissions. In practice this means that where feasible green waste is directly recycled at the point of origin. Where this approach is not viable, as next best option green waste is taken to the council's nearest recycling bay for composting and future re-use within the city's green spaces. All green waste generated within Deepdene is disposed of through these methods, either through chipping directly back onto the site of origin or left stacked in ecology piles.

Unfortunately the council's current overall recycling capacity means that not all green waste produced from the city's thousand plus hectares of green space can be processed in-house, so as the final option the council works with out of city contractors to collect our excess green waste and compost off-site. To minimise unnecessary travel, the delivery of recycled compost is coincided with the collection of fresh green waste taken off-site for processing.

Presently litter bin waste from Deepdene is taken to a local energy recovery facility which recovers heat energy from waste. This heat energy is used to generate electricity for the National Grid.

A pilot to trial dual use recyclable/general waste bins commenced in late 2009 in the city's Central Parks. The success of this pilot and future roll-out across the city will depend on the degree to which contamination of recyclable waste can be avoided. This consideration is particularly pertinent as currently our general waste parks bins are used to dispose of both litter and bagged dog faeces, a policy that has helped significantly reduce the amount of dog fouling found on site over the past five years.

The City Council operates safe working practices to ensure that all pesticides, herbicides and fertilisers are properly applied. The purpose of these procedures is to ensure that all relevant legislation is followed and that records are properly kept and maintained. The Council aims to minimise the use of chemical products and actively seeks alternative approaches where possible. Should there be no alternative to chemical usage then products are selected from an approved list, preventing the use of environmentally unfriendly products.

Glyphosate based herbicide is used for Japanese Knotweed control and on rare occasions for control of weeds under features, such as benches, where manual weeding is not possible. Wherever possible new features are designed in such a way that either it is acceptable to have weeds/grass adjacent to them or they are constructed in a way with a base that will stay weed free.

Any timber used within the park is either from trees cut down in Southampton, as part of the tree surgery contract or woodland management works, or from sustainable FSC certified sources.

#### **2.5.4 Conservation and heritage**

It is important that the unique characteristics of Deepdene are maintained and that the local history is preserved where possible. Site meetings with ecologists will continue, to develop a biodiversity management plan for 2011 to maximise the potential of both the formal and natural environments within the park.

##### **FLORA AND FAUNA**

A cursory survey suggests there is evidence of bats and badgers active in this site. This would need to be verified through more extensive surveys which also should look at birds, wild flowers and possibly invertebrates. Local interest groups and/or Friends group could carry out this survey.

The majority of trees within the site are native, however, there is a significant number of exotic species including, Western Red Cedar, Monterey Pines and



Copper Beech. This would indicate that some formal planting has occurred in the past and it is likely that this land was once a parkland garden.

### DESIGNATED AREAS

This site is covered by a woodland Tree Preservation Order (TPO) and is labelled W1 within The Southampton (Cobden Avenue – Thorold Road) Tree Preservation Order 1955. This means that all trees within the park are protected including small saplings. Any works to be carried out to these trees will require consent from Southampton City Council. Certain works are however exempt from requiring consent these include, removing deadwood and carrying out works to trees that are deemed dead, dying or dangerous.

As this site is deemed a park, the Forestry Act does not apply to felling operations, although consultation with the local FC Agent is often sort before undertaking works.

### CULTURAL FEATURES:

Within the meadow area there is a swing frame with the swings now removed and a helicopter climbing frame. The play area is in poor condition and requires some attention. The play area location is often flooded during winter months and relocation should also be considered. There are various benches along Cobden Avenue and within the site that are in varying degrees of condition.



### PATHS AND ENTRANCES:

There are 2 main entrances to the site, one from Cobden Avenue, currently there is a scaffold pole gate which is also the entrance for maintenance vehicles. There is also an entrance from Midanbury Lane. There are several informal entry points around the boundary of the site.

The paths are informally laid out and are formed of compacted soil. There appears to be 2 main paths from the



Midanbury Lane entrance, one to the Cobden Avenue entrance the other down to the meadow/play equipment. From Cobden Avenue entrance there is path to the meadow/play equipment. There are several other less used paths.

## EVALUATION

From historical map evidence this site appears to have been open parkland/woodland since at least 1836. However, no further investigation into its heritage has been undertaken at this time. Local groups such as the Bitterne Historical Society may be able to help to expand our knowledge of this site and this may be a good action for the community groups to follow up.

### **2.5.5 Marketing**

Publicity for Deepdene is currently poor, it is a locally known resource, but is unlikely to be more than a local park. Marketing, therefore, needs to be on a local basis keeping residents and users abreast of improvements and any events they may wish to hold.

To facilitate this notice boards/information cabinets could be erected on site. These would give a good portal for local marketing. Residents groups can also be encouraged to set up their own web site, which can be linked to from the City Council web pages.

The Open Spaces team also uses GreenSTAT as a key tool for gaining customer feedback on green spaces. This can be promoted more widely through the residents group and poster in the information cabinets.

### **2.5.6 Trees**

A system of tree management known as Southampton's Tree Risk Management Strategy (STORMS) is underway across the city. This ensures that council owned trees are inspected on a frequency determined by the potential usage of the area in which they are situated, and their own potential to cause a hazard.

In August 2006 the trees in Deepdene were surveyed as part of STORMS. Significant trees close to properties and along the roads were individually identified and plotted on GIS mapping software and the condition of these trees were assessed. Various maintenance works were identified and carried out in autumn 2006.

## Chapter 3 - Actions and Recommendations

### 3.1 Progress since last action plan

This is the first management plan for this area and therefore currently there is no progress to report.

### 3.2 Programme of events for 2011

No program of events has been explored at the time of writing this management plan. However, there is space on the site to have local events, and any interested groups will be encouraged to hold their own events with support, where possible, from the Council.

### 3.3 Maintenance schedule

A typical week for the team in the East District looking after Deepdene involves an early morning litter pick once every weekly and general check of the park followed by mowing 7 times a year and responding to queries from members of the public. During the winter when the amount of general maintenance that is required is reduced the team are able to work on alterations and improvements to the park and surrounding woodland.



### 3.4 Action plan for 2010-15<sup>1</sup>

This action plan is a dynamic working document that is reviewed and updated annually. Some proposed actions are aspirational and will depend upon sourcing adequate funding, in collaboration with the residents groups. Although the plan has been ordered according to Green Flag criteria, several of the actions fall under more than one heading.

Action	Lead officer	Key partners and consultees	Estimated resource required and source of funding	Target Completion date	Comments
<i>Welcoming Place</i>					
Improve two main entrances with 'welcome to' signs, and improved access features. Entrances to be more clearly defined and uneven surfaces to be levelled.	Cliff Brown	FoD, Martin Willcox	£6000 – Developer Contributions and external funding	March 2013	2 x post park markers installed (Jun 2012). Midanbury Lane entrance, 2 wooden bollards installed, both entrance paths re-surfaced (Aug 2012). <i>Information cabinets – see under Marketing section</i>
Upgrade scaffold pole barrier to provide a formal gate feature.	Cliff Brown	FoD, Martin Willcox	£2,365 – Developer Contributions	March 2013	Improve access and make entrance more welcoming. FoD would like less formal vehicle barrier. The proposed design (Appendix 2) agreed Oct 2012 and ordered.

<sup>1</sup> This action plan is for the period 01.01.07 onwards therefore some actions may be complete prior to the judges' field assessment. However the action plan contains some actions that will be completed after the life of the plan.

Action	Lead officer	Key partners and consultees	Estimated resource required and source of funding	Target Completion date	Comments
Waterlogged path near entrance to main grass area and area around play equipment.	Ian Miller	FoD, Andy Welch, Martin Willcox	Developer Contributions	March 2015	Cut back large Cherry Laurel & brambles to allow re-route of path 2m back up slope (on drier ground). Further discuss options to create a drier route to play area, e.g. raised path with drainage.
Work with residents groups to carry out user audits	Cathy O'Leary	FoD Martin Willcox Ian Miller	£0	March 2015  (completed Oct 2011)	Ongoing user surveys will help to shape and lead designs. User survey completed (summer 2011) <i>See report in Appendix 1</i>
<i>Healthy, safe and secure</i>					
Renovate current play area and re-provide natural play through out woodland	Cliff Brown	FoD Tony Hill Martin Willcox, Tree Team	£3,000+ – Developer contributions and external funding	March 2015	Safety surfaces cleaned (Jun 2012). Tony Hill & FoD started consultation at event (Jun 2012). Swings replaced (Aug 2012). Climbing frame repainted at volunteer event on 29/09/12.
Work with the police and Safer Communities team to design safer access routes.	Cliff Brown	FoD, Martin Willcox, Derek Stevens	£500 – Development fund	March 2015	Ongoing advice, as designs evolve.
<i>Clean and well maintained</i>					
Complete specific woodland management plan and undertake works	Hannah Chalmers	FoD, Martin Willcox, Tree Team	£5000+ - Developer contributions & ext. funding	March 2014	Woodland improvement works to be undertaken by Council Tree Surgery contractors.

<b>Action</b>	<b>Lead officer</b>	<b>Key partners and consultees</b>	<b>Estimated resource required and source of funding</b>	<b>Target Completion date</b>	<b>Comments</b>
Carry out audit of bins and ensure they are emptied regularly enough. Upgrade as necessary.	Martin Willcox	FoD	£900	March 2012 (completed)	3 New all metal bins installed (Mar 2012)
<i>Sustainability</i>					
Use logs and cuttings from the woodland to make ecology piles and where large enough informal seats.	Hannah Chalmers	FoD, Martin Willcox	£2000 – Developer contributions and external funding	March 2015	Ongoing throughout life of management plan as works are carried out.
Use logs from the woodland to form natural play throughout the woodland	Cliff Brown/ Hannah Chalmers	FoD, Martin Willcox	£4000 – Developer contributions and external funding	March 2015	Ongoing throughout life of management plan as works are carried out.
<i>Conservation and heritage</i>					
Complete a biodiversity action statement and carry out the recommendations.	Andy Welch	FoD, Martin Willcox, Phil Budd, Paul Chamberlain, Mark Painter	£1000+ - Developer contributions and external funding	March 2013	Once written actions will become part of this management plan. Phil Budd has conducted surveys of flora / fauna. Paul Chamberlain & Mark Painter have recorded observations of birds.
Contact Bitterne History Society and get a better understanding of the heritage of the area.	FoD	Nick Yeats	£0	March 2013	Information gathered by residents and then relayed to Nick Yeats for inclusion in the management plan.
Remove and treat invasive species, e.g. Japanese Knotweed	Simon Buston	Martin Willcox	£500 – Parks budget	March 2015	Ongoing treatment of Japanese Knotweed with Glyphosate.



<b>Action</b>	<b>Lead officer</b>	<b>Key partners and consultees</b>	<b>Estimated resource required and source of funding</b>	<b>Target Completion date</b>	<b>Comments</b>
<i>Community involvement</i>					
Encourage local residents groups to form a Friends of Deepdene group.	Nick Yeats	BPRA, FoD, Martin Willcox	£0	April 2012 (completed)	Friends of Deepdene committee elected Mar 2012, constitution and equal opportunities policy adopted in Apr 2012.
<i>Marketing</i>					
Install one or two information cabinets.	Cliff Brown	FoD, Martin Willcox	£5000 – Developer contributions and external funding	March 2013	Cabinets will enable better marketing of the area and let local residents know what is going on. Possible installation of any Cabinets (A2 size, £2000) and/or Pedestal Information signs (A2, £1100) in consultation with local residents and users.
Work with Local Residents to put on an event to promote the area.	Hilary Bradley	FoD, Martin Willcox	£1000 – Development fund	June 2012 (completed)	Event to raise awareness of the area, get feedback on potential park improvements and recruit members of a friends group. (Sat 16 <sup>th</sup> June 11-2pm). Volunteer event completed on 29/09/12.
<i>Management</i>					
Consult on Management plan with local residents groups.	Nick Yeats	FoD, Martin Willcox	£0	Ongoing	Plan available to view online via Deepdene page of SCC website from Apr 2012.
Update Management Plan as appropriate.	Nick Yeats	FoD, Martin Willcox	£0	Annually	Latest update 26/11/2012

### 3.5 Friends of Deepdene Action Plan 2012-13

This section is dedicated to any Friends or residents group own action plan for the area. The action plan should be developed by the Friends/residents group in consultation with the District Manager and other relevant members Neighbourhood Services. The plan should contain elements that the friends will undertake on their own, joint projects and items that the friends will support the Council with.

Example of Friends/residents action plan

<b>Projects for the Friends to lead on and do – 2012/13</b>	
<b>What</b>	<b>When</b>

<b>Projects for joint working with Friends and SCC</b>	
<b>What</b>	<b>When</b>

<b>Projects led by SCC with opportunities for involvement of Friends group</b>	
<b>What</b>	<b>When</b>
Outdoor family activity event	Sat 16 <sup>th</sup> June 11 – 3 pm 2012
Volunteer Event	Sat 29 <sup>th</sup> September 11-1pm 2012

### Appendix 1: User Survey report October 2011

## Report on Deepdene User Survey 2011



A Consultation Draft Management Plan for the Deepdene site was written in 2010 and part of the action plan was to conduct a user audit in conjunction with a local residents group. In spring /summer of 2011 a user audit was conducted by Cathy OLeary and Ian Miller, from Southampton City Council (SCC), in conjunction with the Bitterne Park Residents Association (BPRA).

Interview of users at Deepdene were conducted on 19/04/2011 (14.00 to 17.00 hrs), on 21/04/2011 (10.00 to 12.00 hrs) and 17/04/2011 from (17.00 to 19.00 hrs). The different times of day were chosen to question different user groups.

The BPRA distributed a similar version of the questionnaire in July 2011, then collected and returned them to SCC. BPRA members and staff from Charlton House, St Mary's College were consulted at meeting on site on 17/08/11.

An online questionnaire was made available on the SCC website at the SCC website was set up from 21/06/2011 until 05/08/2011.



Deepdene - meadow area

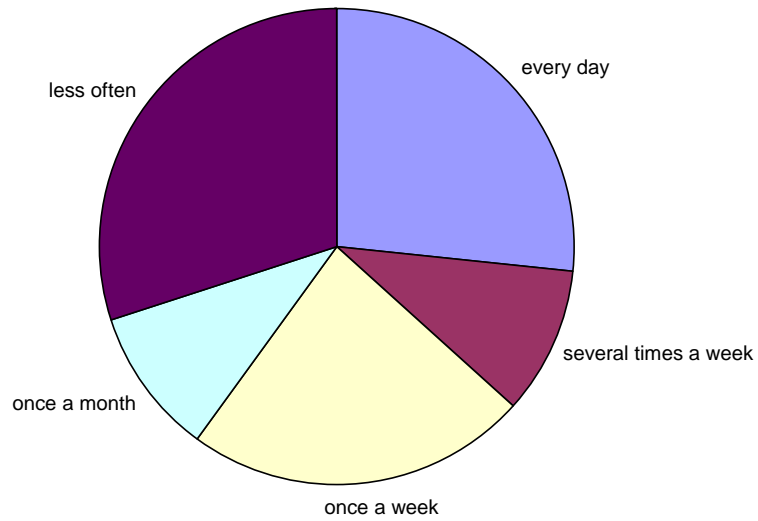
<b>Total responses</b>	<b>35</b>
Users	30
Non Users	5

The following summary provides an overview of key findings. Open ended comments have been grouped into similar categories in order to show how often each aspect was raised. All figures provided show frequency, rather than percentage, of response.

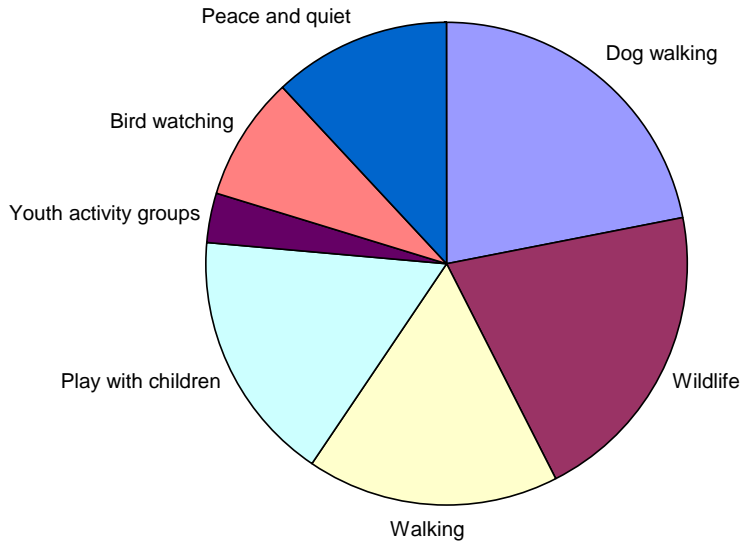
<b>Frequency of use</b>	every day	8
	several times a week	3
	once a week	7
	once a month	3
	less often	9

<b>Reason for use</b>	Dog walking	13
	Wildlife	12
	Walking	10
	Play with children	10
	Youth activity groups	2
	Bird watching	5
	Peace and quiet	7

**Frequency of Use at Deep Dene**



## Reasons to use Deep Dene



### Encourage to use more

Improve / clear paths	13
More benches	8
More waste bins	7
Lighting	2
Put in / refurbish pond	4
Signage & entrance	5
Reduce dog fouling	3
Other	8

### Other single responses (detail)

Nature trail  
 Dogs on leads  
 Wildflowers in meadow  
 Short grass area  
 Log seats  
 Re-site play area

### Play area improvements

22 people commented

New /improved equipment	18
Reinstate swings	7

### Consultation feedback from other groups (additional comments):

*Charlton House, St Mary's College*



Pupils to be involved in designing play equipment, development of a pond, tree identification and map, planting to attract insects / birds, wild flowers. Pupils to use the area for pond dipping, tree/plant/flower/mini beast identification, bark & leaf rubbings, history of area, geography – improving our local area.

#### **BPRA**

Clearing some undergrowth, tree / shrub planting, easier access for prams etc and signage



Deepdene - existing play area

<b>No. of people who want to be involved in future developments of the park</b>	11
<b>No. of people who want results from the survey</b>	20

#### **History of Deepdene**

“The adjacent main house was / is called 'Deepdene' and therefore the park should be known as this.”

“The last owner of Deepdene House left it to the local council.”

“One of local names used during 1950s was 'Bluebell Woods'.”

#### **Possible Implementation of suggested improvements**

These are in line with the Action plan in the Consultation Draft Management Plan.

*Short Term: by March 2012*

Paths. Define main paths around site by pruning back encroaching vegetation.

*Medium Term: by March 2015*

Benches. Use of logs to create informal seating.

Waste bins. SCC now uses general waste bins for the disposal of dog waste, rather than designated dog bins. A bin beside each entrance would provide dog owners with opportunity to dispose of waste and hopefully reduce the highlighted dog fouling problem.

Signage / improved entrance. Though there were a couple comments against putting up signs, the majority of opinion was to have some information about the park and to mark the entrances. Signs with park information could be installed at each entrance providing they are sympathetic to the site, by avoiding highly formal designs. Upgrading the scaffold pole barrier at the Cobden Road entrance would improve this access point.

Lighting. The informal nature of the park and high cost prohibits the installation of formal lighting. The clearing of vegetation by the path sides and removal of invasive evergreen species such as laurel and rhododendron would make the pathways lighter and feel less enclosed.

Pond. The small informal pond can be cleared and some of the surrounding holly cut back. It is an unsuitable site for a healthy pond because the heavy leaf drop and reduced light from the canopy of mature trees, which cannot be removed due to the tree preservation order on the site.

Play Area. Reinstate swings, renew safety surface and repaint equipment. Investigate use of logs for informal play equipment.

**Next steps:** by Dec 2012

Incorporate the results of the user survey into the final Deepdene Management Plan.

Ask if those who responded that they would like to be involved the future development of the park if they would like to form a friends group.

Set up a stakeholder meeting to include Bitterne Park Councillors, BPRA, friends group (if formed) and relevant SCC Staff (Park Development, Area Maintenance team and Play Development Co-ordinator).

**Appendix: Copy of questionnaire**

**Deepdene Park Questionnaire**

Southampton City Council is working in partnership with Bitterne Park Residents Group to improve this area and we would be grateful if you would take a few moments to complete the following questionnaire to make your views known.

How often do you use Deepdene ?			
Daily	<input type="checkbox"/>	Once A Week	<input type="checkbox"/>
Several Times A Week	<input type="checkbox"/>	Once A Month	<input type="checkbox"/>
Less often	<input type="checkbox"/>	Never	<input type="checkbox"/>
If Yes, Why do you visit Deepdene park?			
If Never, Why do you not use the park ?			
What do you like about the park ?			
What do you dislike about the park ?			
What changes would encourage you to use the park more often ?			
Do you or your family use the play area ? Yes / No			
How could the play area be improved ?			

How could the access to Deepdene and around the park be improved ?	
What do you know about the history of Deepdene ? ( We are interested in learning more about the area, to ensure that any changes are in keeping and to help people understand more about the park. Please write any anecdotes or information you know about the area)	
Would you like to receive an email with the results of this survey ?	Yes / No
Would you like to be actively involved in the future of the park ?	Yes / No
<i>(Regular and ad hoc opportunities to be involved, including becoming a 'friend' of Deepdene or help to manage the park, e.g. conservation work, wildlife surveys)</i>	
Your details - * Optional if you want to be contacted with feedback or getting more involved	
Post code	
Date	
Name*	
E-mail (preferred) *	
Telephone no. *	
Address*	

Online survey form & further information is available by selecting Deepdene link online:

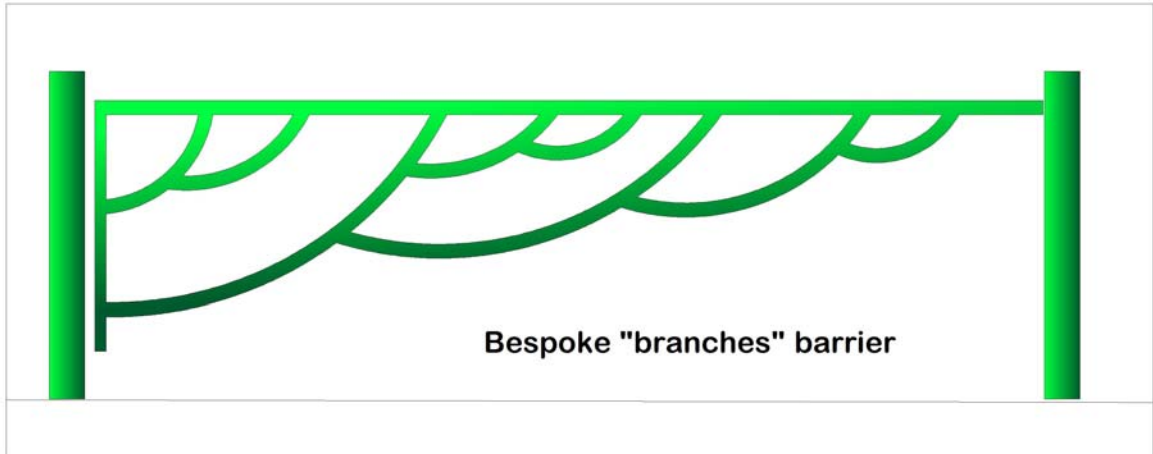
[www.southampton.gov.uk/s-leisure/parksgreenspaces/ParksLocaltoYou/](http://www.southampton.gov.uk/s-leisure/parksgreenspaces/ParksLocaltoYou/):

Send forms or comments by post to:

Southampton City Council, Open Spaces, FREEPOST, SCE 2854, Southampton, SO14 7UB.

*Please Note : This form will be passed to Southampton City Council and Under the Data Protection Act personal details may be only be used by to contact you regarding this project. They will not be passed to any third parties and you will not be identified in any report produced.*

Appendix 2: Deepdene Barrier design for Cobden Road entrance



**Tubular steel barrier.  
Galvanised and powdercoated.**