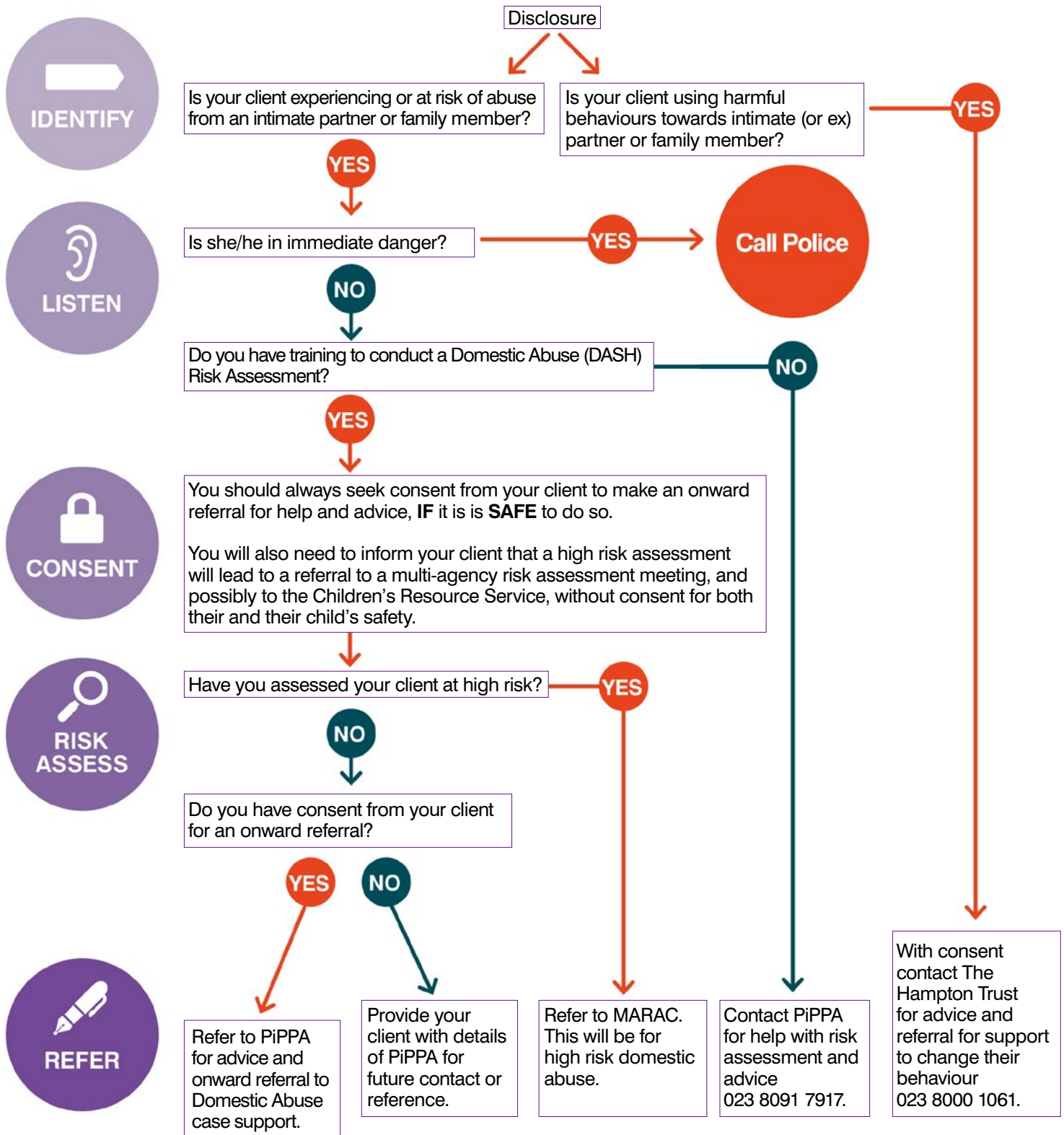


# Guidance for professionals

## Southampton Domestic Abuse Pathways

March 2025



### Safeguarding Children, and Adults with additional care needs (Vulnerable adults)

For further guidance on concerns for children or adults please see Guidance for professionals

[www.southampton.gov.uk/people-places/community-safety/domestic-abuse/information-for-professionals/](http://www.southampton.gov.uk/people-places/community-safety/domestic-abuse/information-for-professionals/)