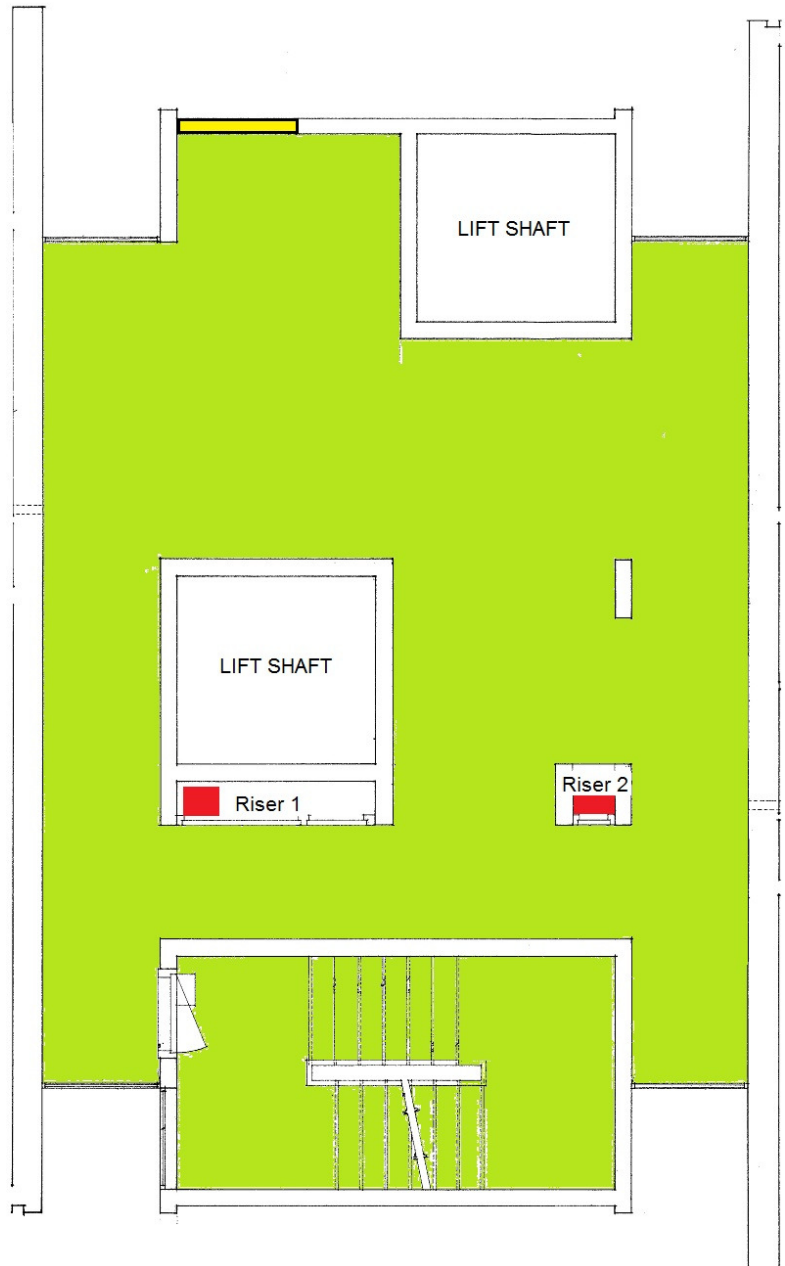





SHIRLEY TOWERS - FLOOR 12 DRYING ROOM
MARCH 2016



Key	
	Asbestos insulation board
	Asbestos cement
	Artex

This plan may not illustrate all incidents of asbestos or potential asbestos associated with this property.

This plan must be read in conjunction with the asbestos property report provided by Southampton City Council's Asbestos Database.

Produced by Scientific Services - Southampton City Council.