

DO NOT SCALE FROM THIS DRAWING
ALL DIMENSIONS TO BE CHECKED ON SITE

- Notes:
- REFER TO DRAWING S2000 FOR GENERAL NOTES.
 - REFER TO DRAWINGS S2001-S2012 FOR TYPICAL SECTIONS AND DETAILS. (ADDITIONAL UNIQUE DETAILS MAY BE PROVIDED ON A SITE BY SITE BASIS, AS REQUIRED).
 - THE CONTRACTOR SHALL CHECK ALL DIMENSIONS ON SITE PRIOR TO FABRICATION.

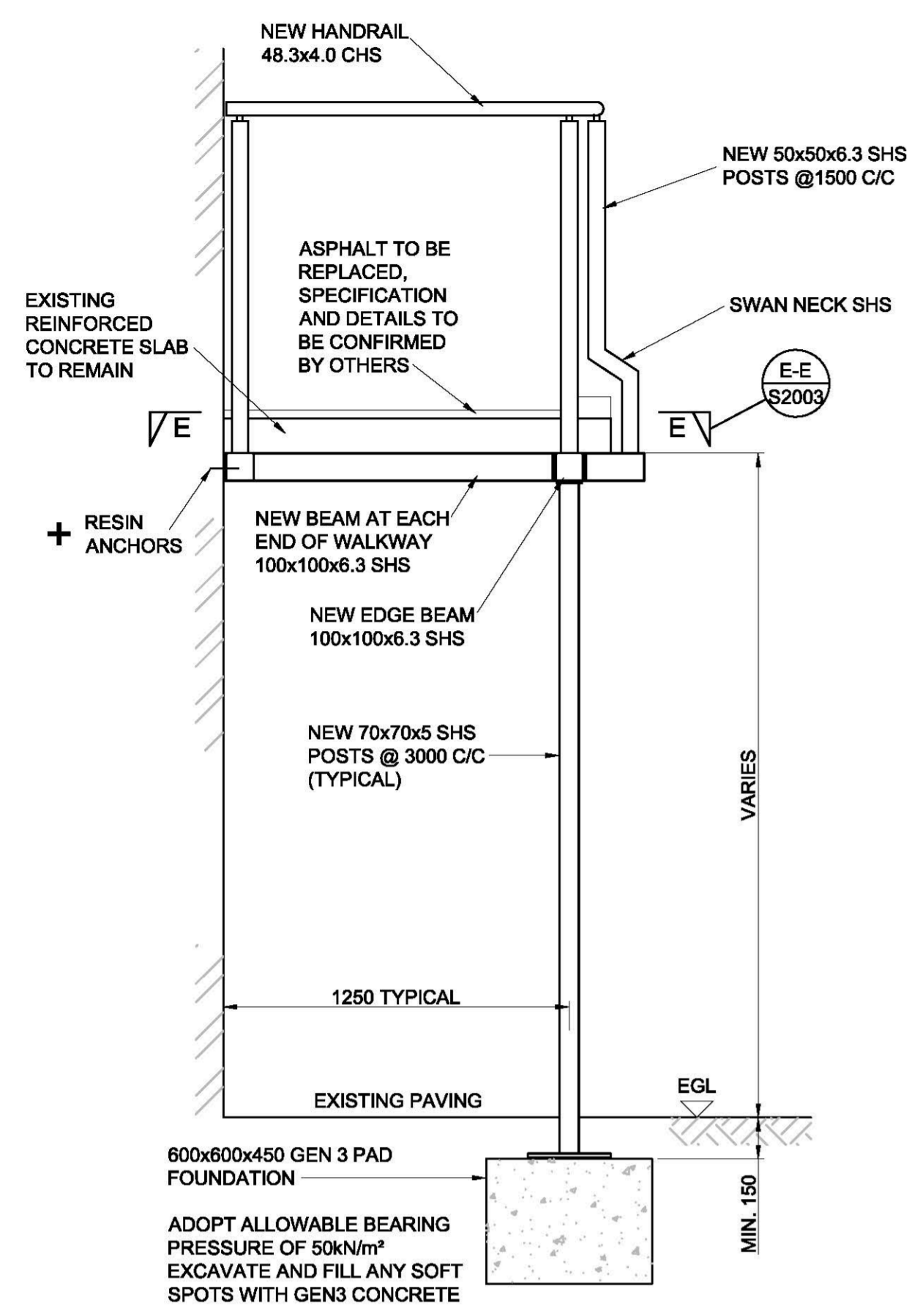
DIMENSIONS MARKED AS VARIES WILL BE DETERMINED BY THE INDIVIDUAL BLOCK SURVEYS AND SUBSEQUENT DRAWINGS BY ENGINEER. REFER TO ELEVATION DRAWINGS FOR RELEVANT SITE

FOUNDATION DEPTHS SHOWN ON THIS DRAWING ARE MINIMUM, REFER TO RELEVANT ELEVATION DRAWINGS FOR FOUNDATION DEPTHS

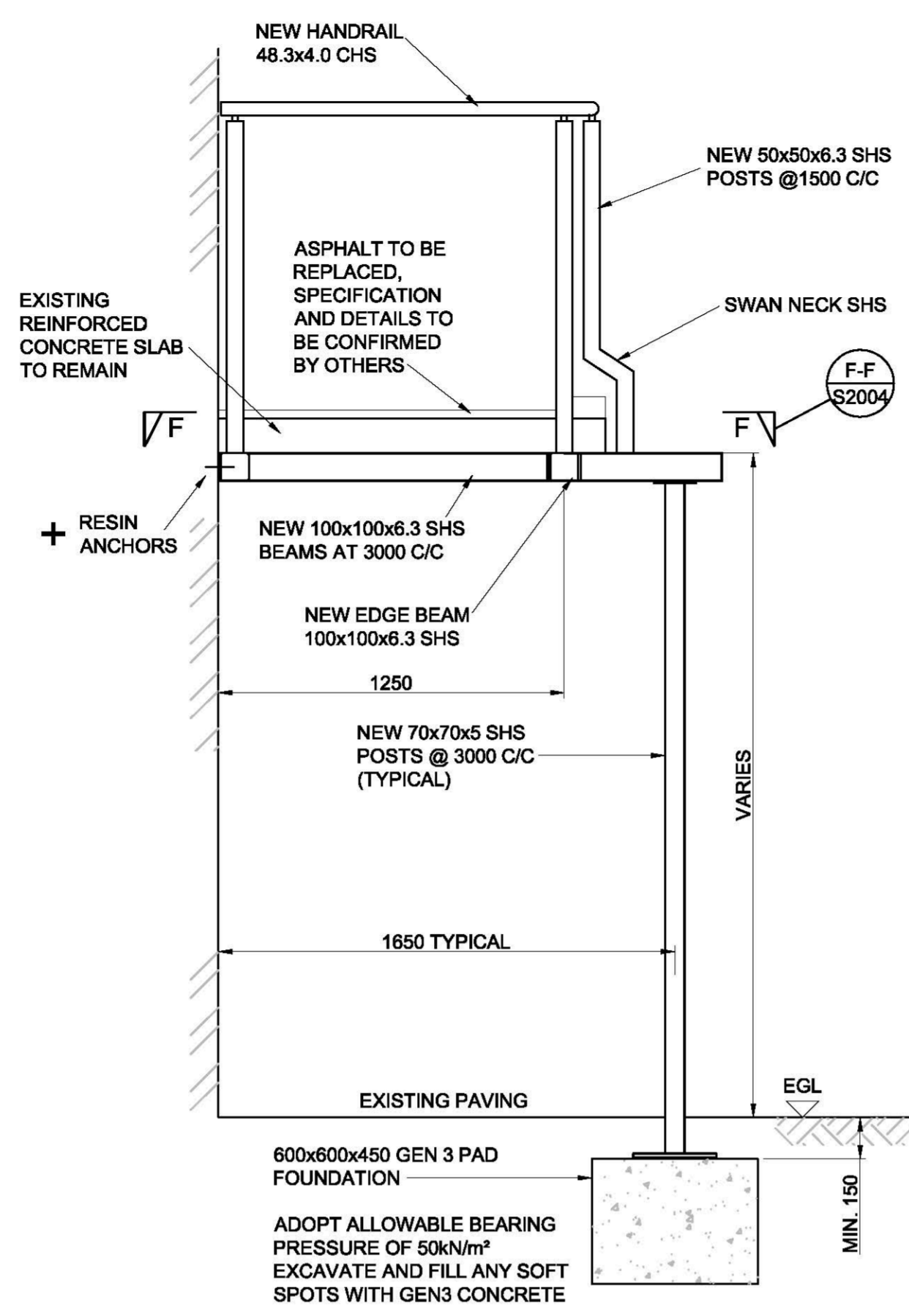
ALL DETAILS AND SECTIONS SHOWN FOR BALCONY ENDS AND EXTERNAL STAIRS ARE SIMILAR BUT HANDED FOR THE OPPOSITE ENDS

ALL RESIN ANCHORS MARKED WITH '+' ARE TO BE 2 No. M12 HILTI HIT-HY70 WITH HIT-V ROD AND HIT-SC 22x... MIN. EMBEDMENT 80mm 'RESIN ANCHORS' OR SIMILAR APPROVED

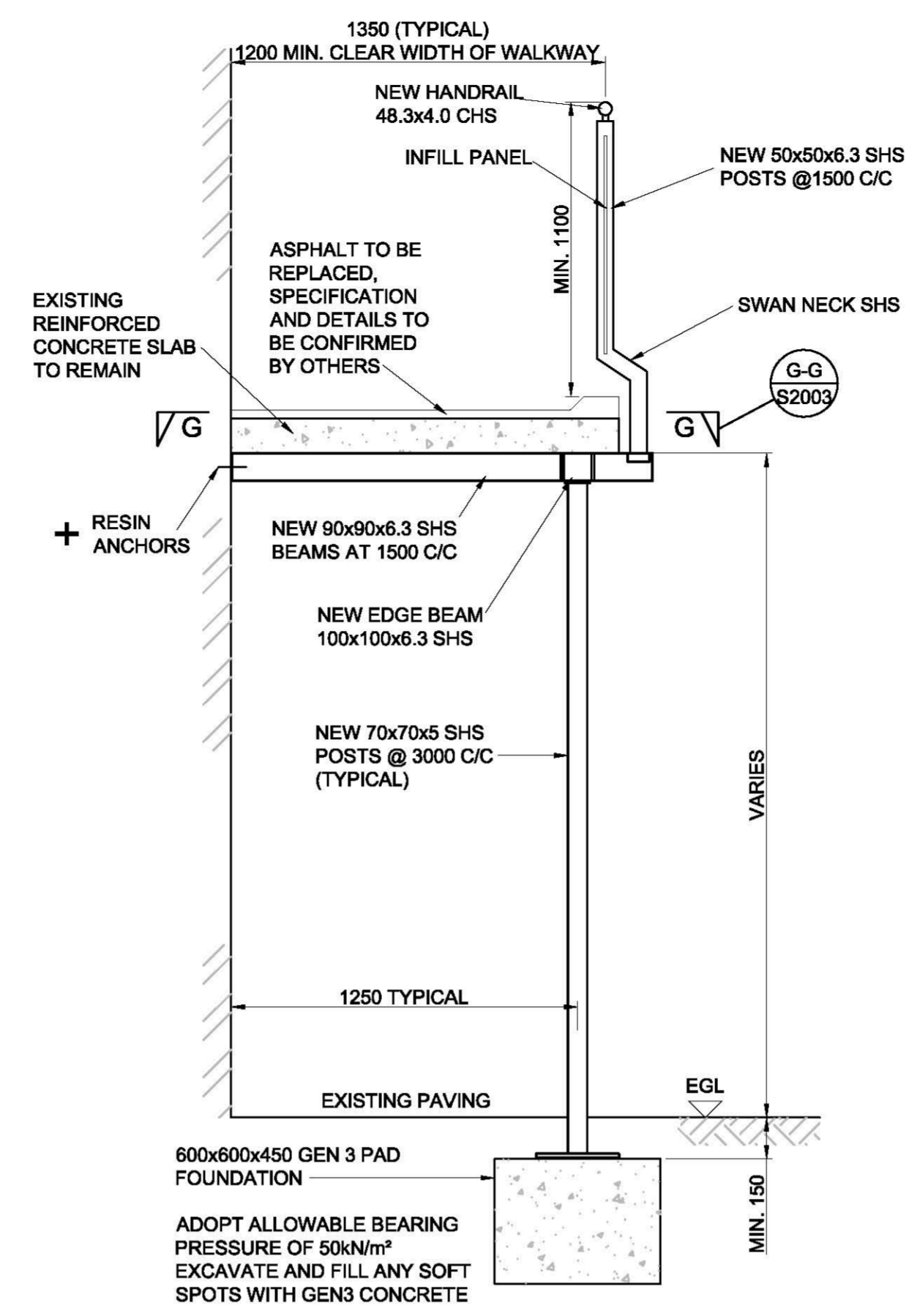
ALL STEEL TO BE GRADE S355, GALVANISED 140um AND POWDER COATED



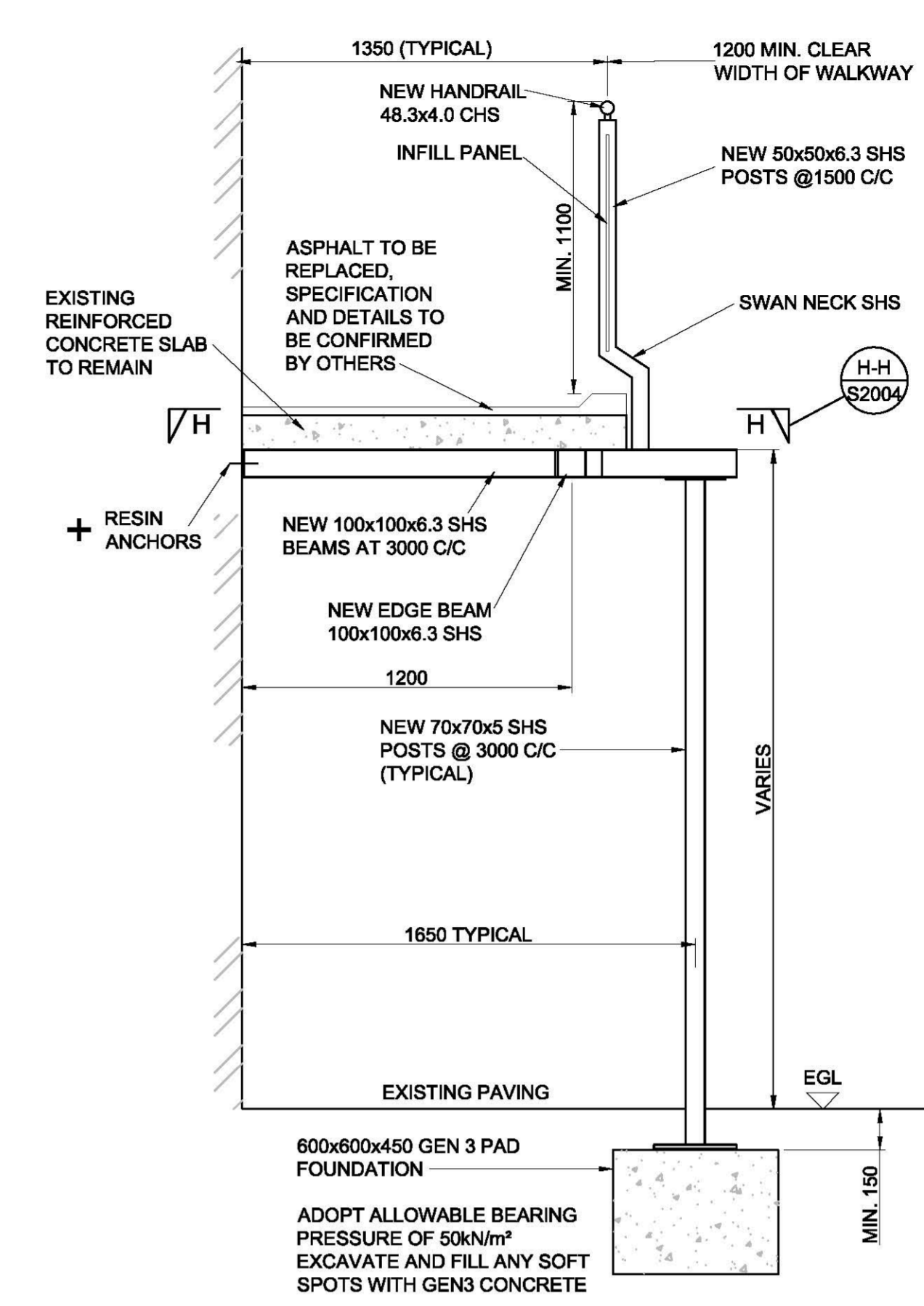
SECTION A-A
(TYPICAL COLUMN POSITION)
SCALE 1:20



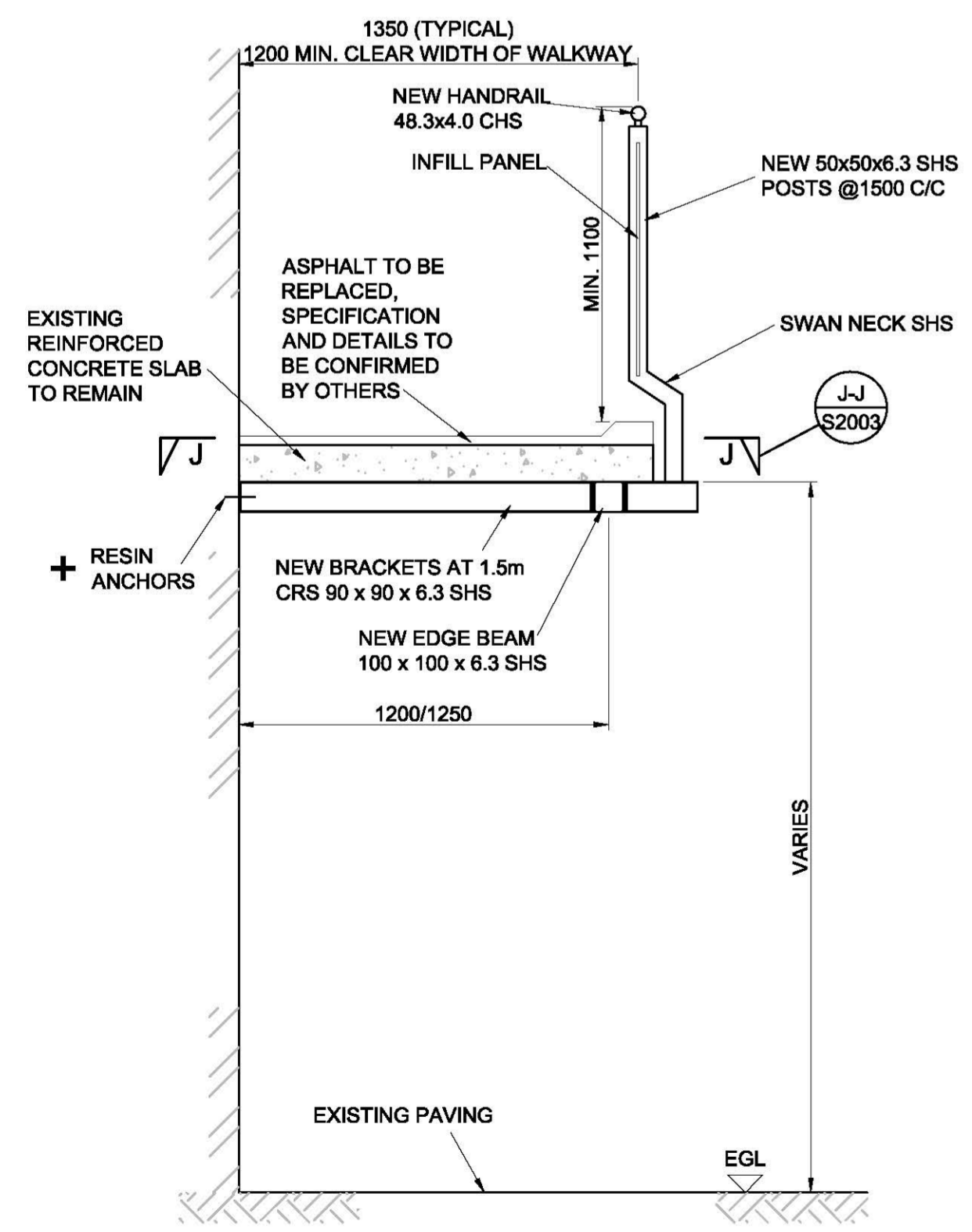
SECTION A1-A1
('EXTENDED' COLUMN POSITION)
SCALE 1:20



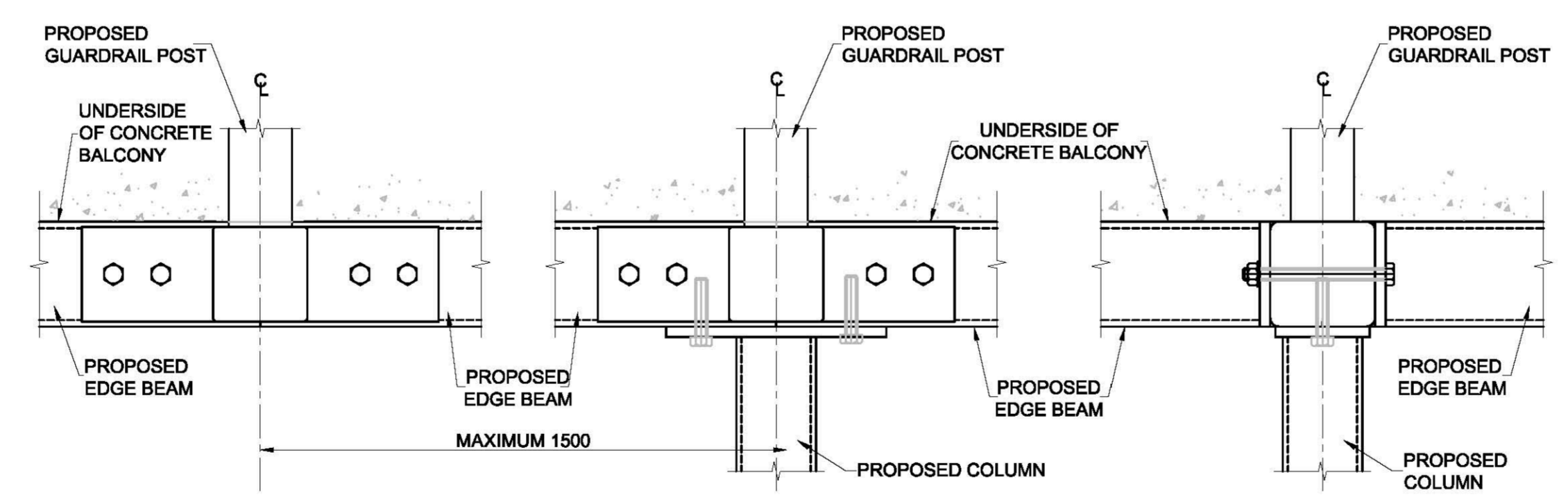
SECTION B-B
(TYPICAL COLUMN POSITION)
SCALE 1:20



SECTION B1-B1
('EXTENDED' COLUMN POSITION)
SCALE 1:20

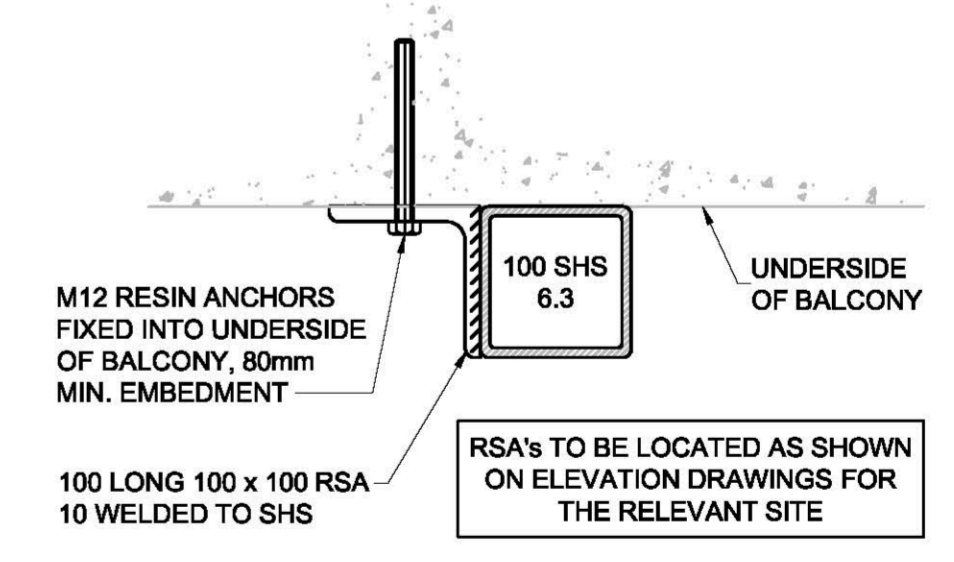


SECTION C-C
(FOR TYPICAL AND EXTENDED BALCONIES)
SCALE 1:20



DETAIL 1
SCALE 1:5
FOR DETAIL LOCATION SEE DRAWING S-2001

DETAIL 2
SCALE 1:5
FOR DETAIL LOCATION SEE DRAWING S-2001



DETAIL 3 - SHOWING RSA'S WELDED TO SHS (TYPICAL)
SCALE 1:5
FOR DETAIL LOCATION SEE DRAWING S-2001

T1	03.03.17	INITIAL TENDER ISSUE	AF	VJJ
Rev	Date	Amendments	By	Chk

Drawing Status: **TENDER**



Client:
CANTILEVER BALCONY SUPPORT - LOT 2 'HOUSING WALK-UP' BLOCKS

Drawing Title:
TYPICAL BALCONY SECTIONS AND DETAILS

Project No.:	Drawing No.:	Rev.
RP200058	S2002	T1
Date:	Scale:	
MARCH '17	AS SHOWN @ A1	
By:	Checked:	Approved:
VJJ	VJJ	DH
UPR Number:		